



# The Marvel's *Elite*



Corp. Office:  
202, Dev Arc, Opp. Iskon Temple,  
S.G. Highway, Ahmedabad 380 015.  
Gujarat, INDIA.  
Ph.: +91 79 6612 5541 /, Fax: +91 79 6612 5600  
Email: [contact@bonzer7.com](mailto:contact@bonzer7.com), [info@bonzer7.com](mailto:info@bonzer7.com)  
[www.bonzer7.com](http://www.bonzer7.com)  
Toll Free No. 1800 123 4475



**Bonmarble**  
DIGITAL VITRIFIED TILES  
**800 X 2400 MM**  
**1200 X 1800 MM**

Gather Expressions of

*Majestic  
Grace*



With our unvarying focus towards creating a comprehensive collection of formidable products and exceptional service, we have fast become one of the front-runners in the ceramic space. We aspire to use our expertise and ardor to turn your dreams into reality.

We are always striving to upgrade our technology to manufacture superior products. At Bonzer7, we follow the adage 'Inspired By You'. It is a priority for us to meet the expectations of our customers fittingly. Our efforts are directed towards providing our customers new designs with unmatched quality.

A testament to our 'customer first approach' is our happy customers. We have become the preferred brand of country's prime architects, interior designers, custom home builders, developers and astute homeowners in a short span of time.

**Bonmarble**  
DIGITAL VITRIFIED TILES  
**800 X 2400 MM**  
**1200 X 1800 MM**



Wall Tiles



Floor Tiles



Rocker



Glossy



Domestic



Digital



Correct  
Rectified



Interior



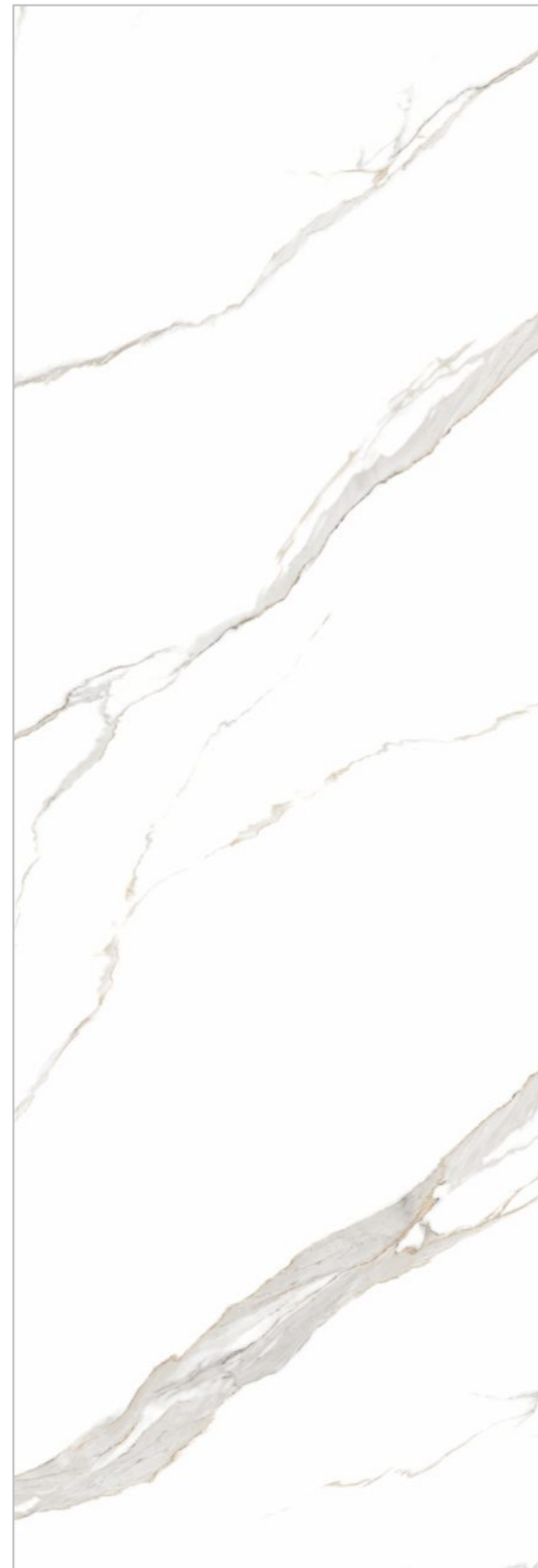
Commercial



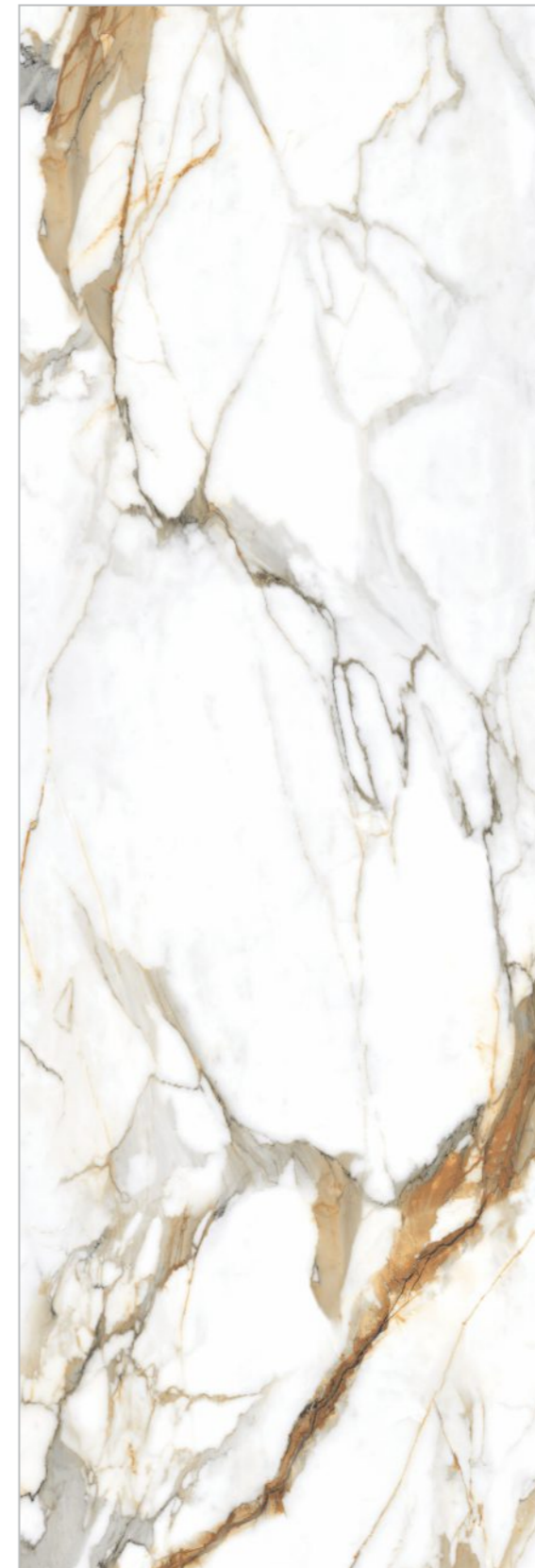
Random



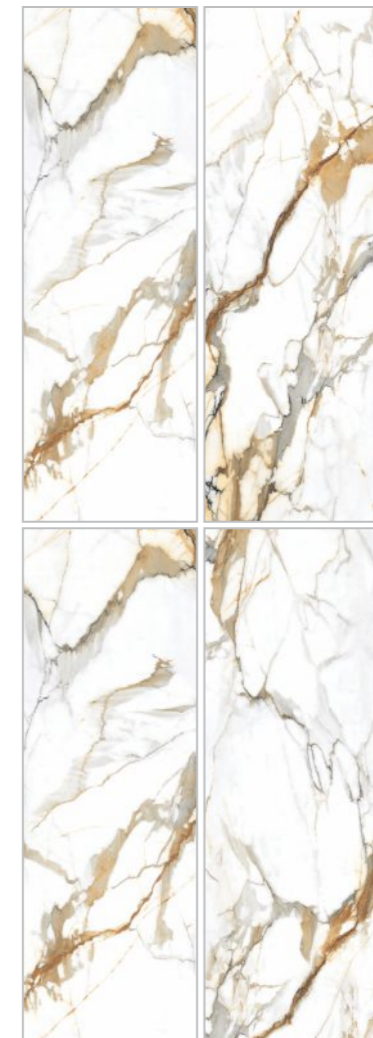
CARRARA STATUARIO  
HIGHGLOSS | 800 X 2400 MM



**CARRARA SATUARIO**  
HIGHGLOSS  
800 X 2400 MM

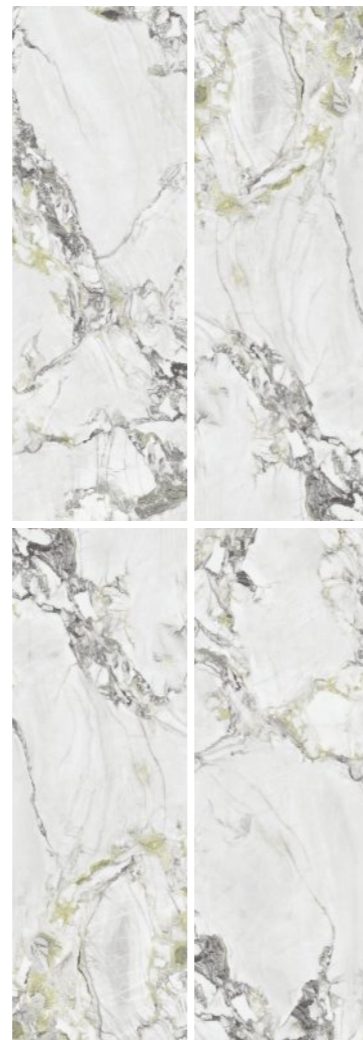


**VENATO GOLD**  
HIGHGLOSS  
800 X 2400 MM

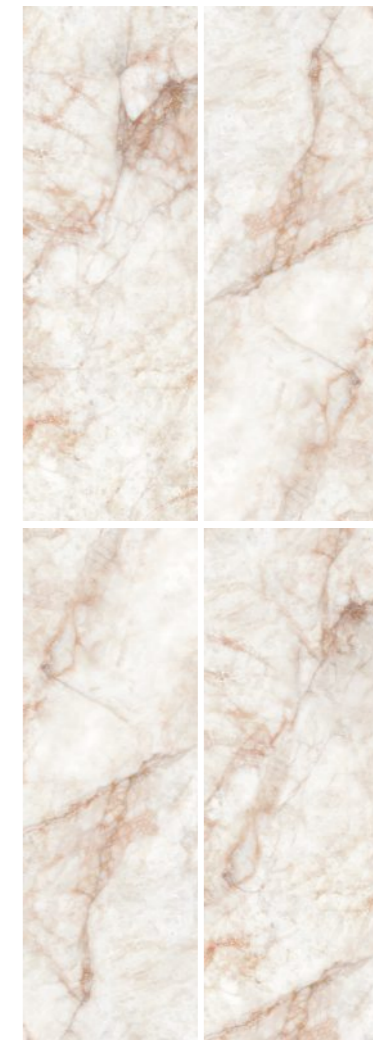




**ICEBERGE WHITE**  
HIGHGLOSS  
800 X 2400 MM



**SALMON ONYX**  
HIGHGLOSS  
800 X 2400 MM

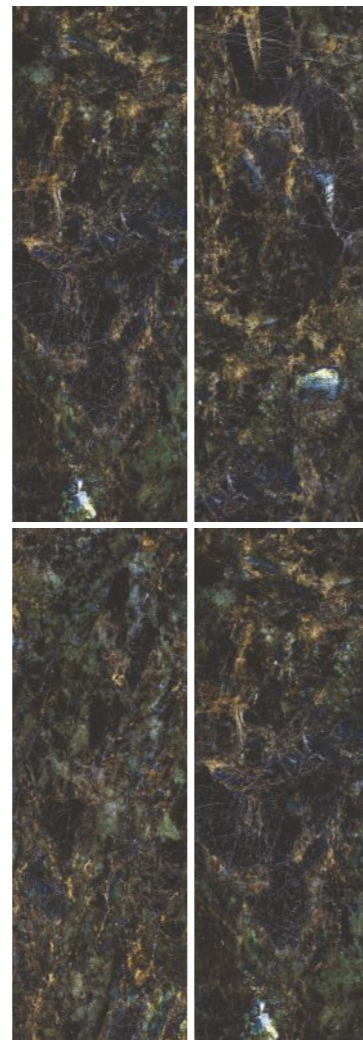




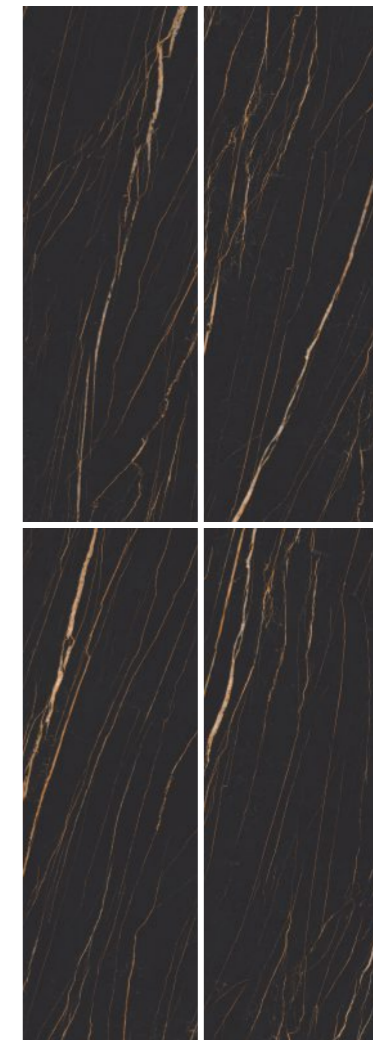
SPECTROLITE  
HIGHGLOSS | 800 X 2400 MM



**SPECTROLITE**  
HIGHGLOSS  
800 X 2400 MM



**BLACK GOLD**  
HIGHGLOSS  
800 X 2400 MM

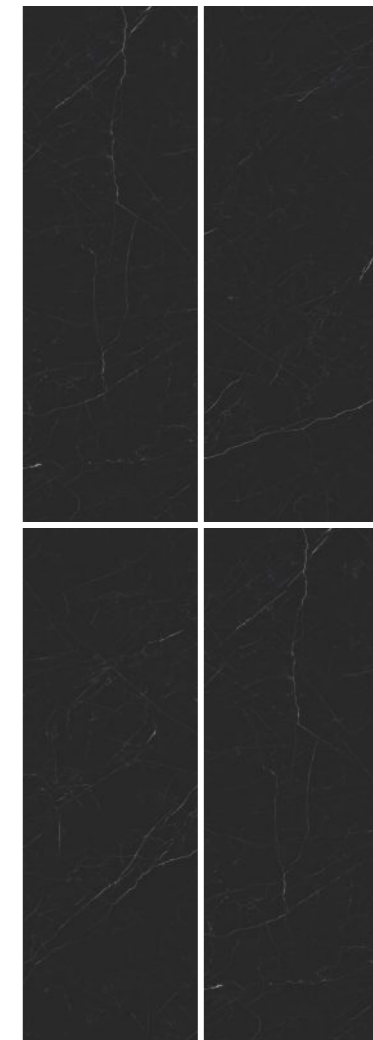


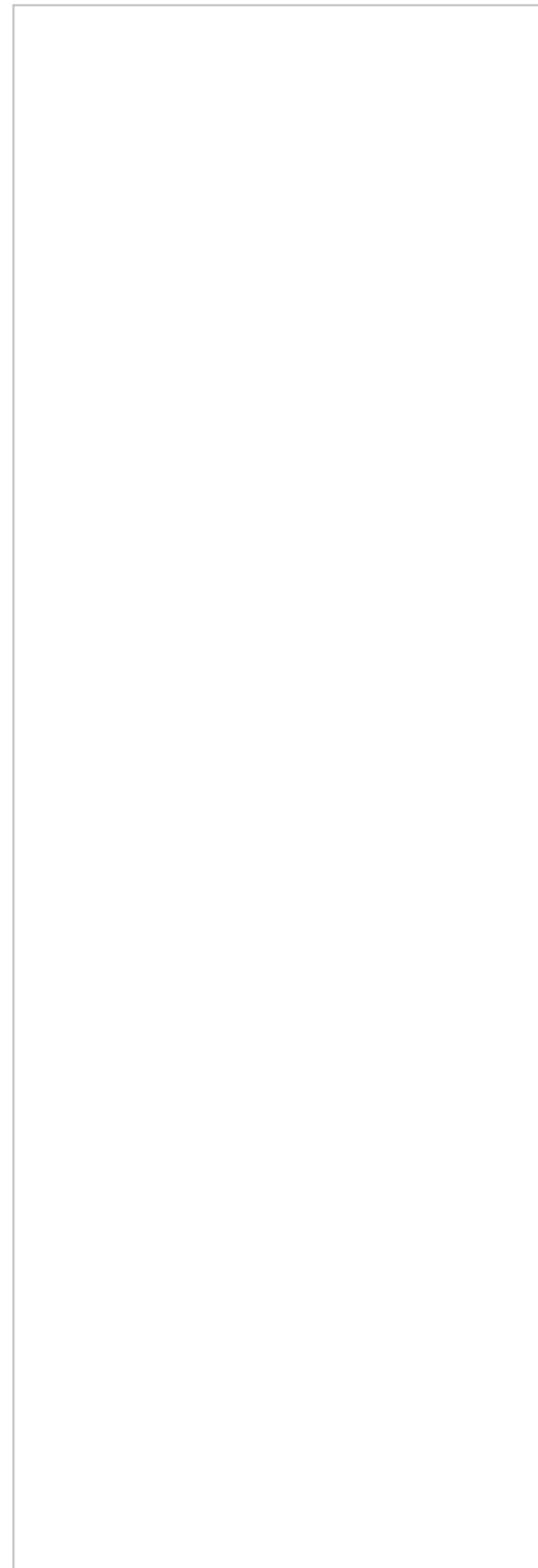


**MATRIX PORTORO**  
HIGHGLOSS  
800 X 2400 MM



**BAHAMA BLACK**  
HIGHGLOSS  
800 X 2400 MM

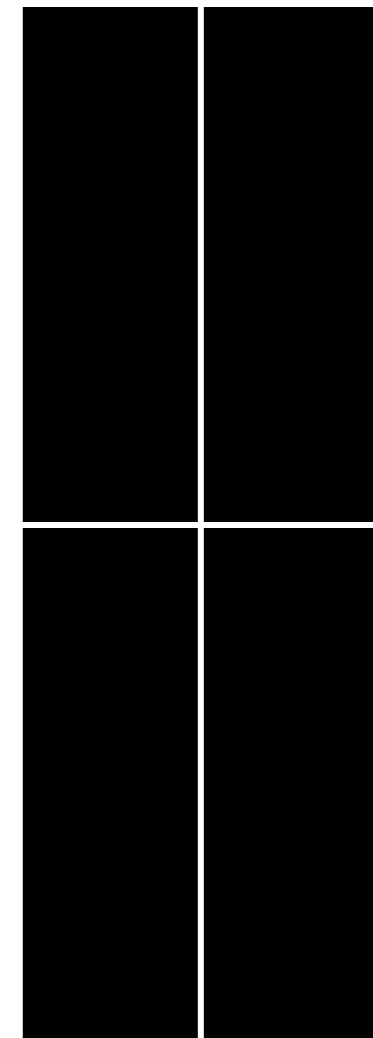




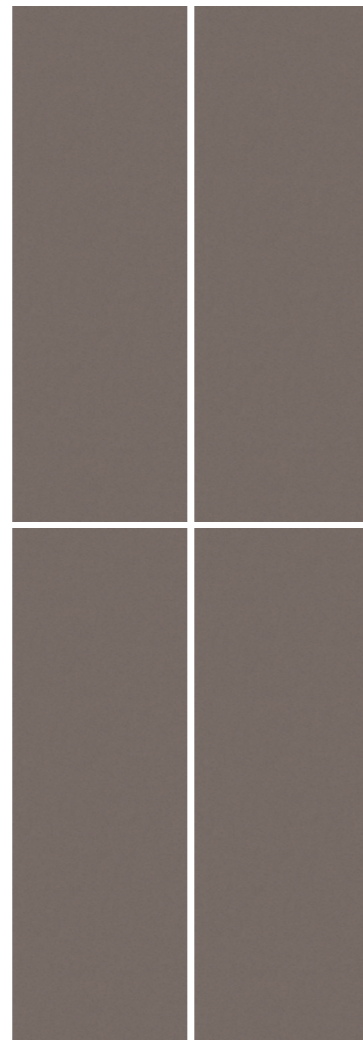
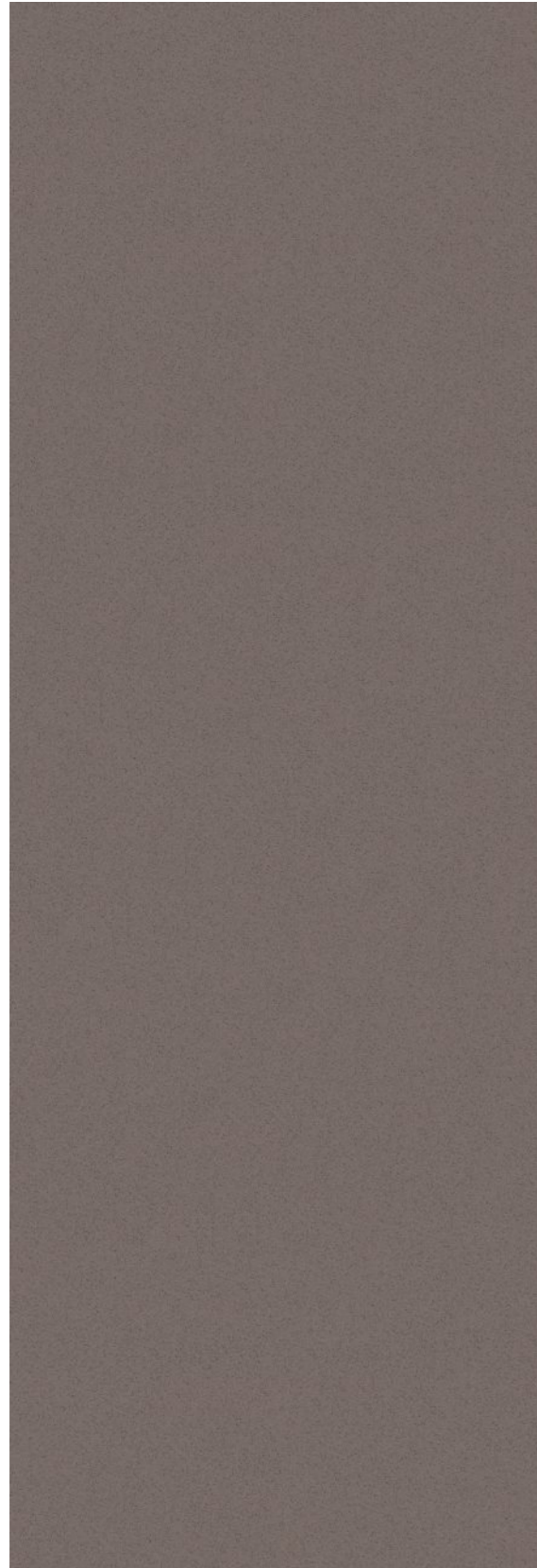
**BON WHITE**  
HIGHGLOSS  
800 X 2400 MM



**BON BLACK**  
HIGHGLOSS  
800 X 2400 MM

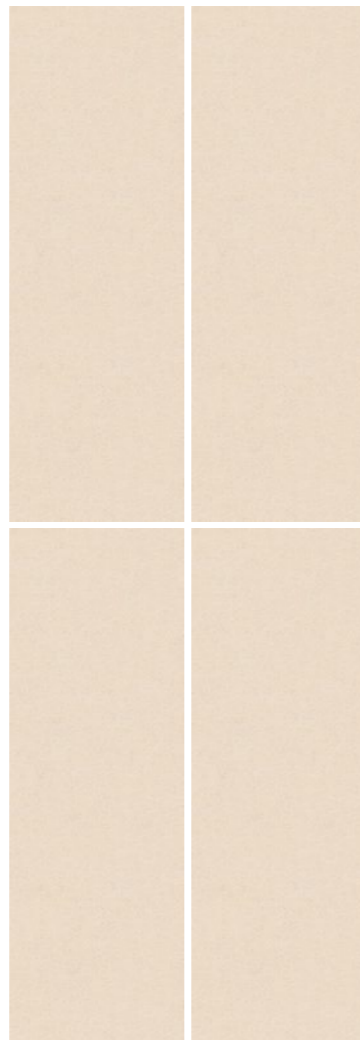


**SNP CHOCO**  
HIGHGLOSS  
800 X 2400 MM

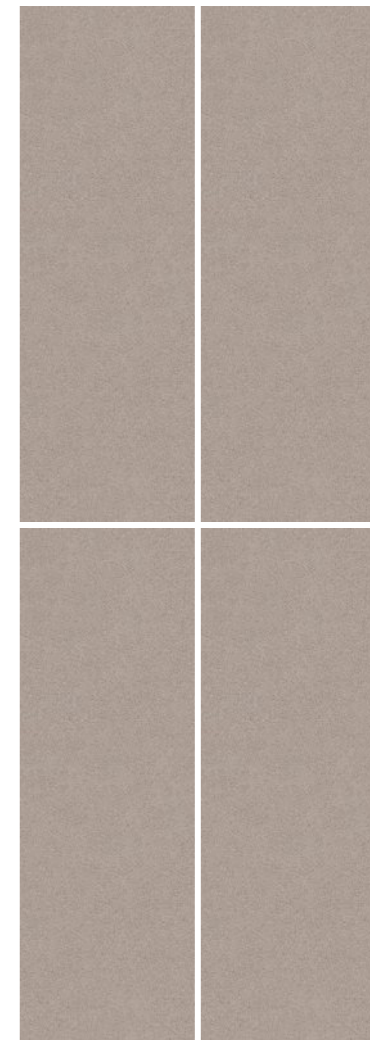


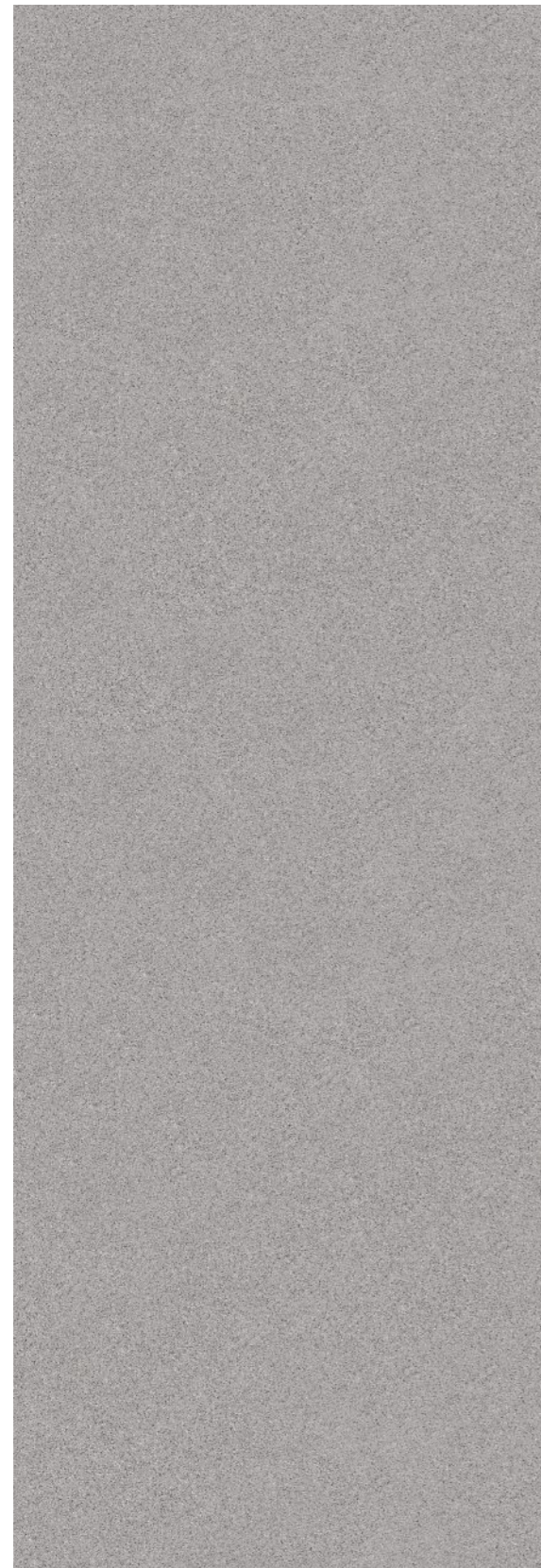


**SNP CREMA**  
HIGHGLOSS  
800 X 2400 MM

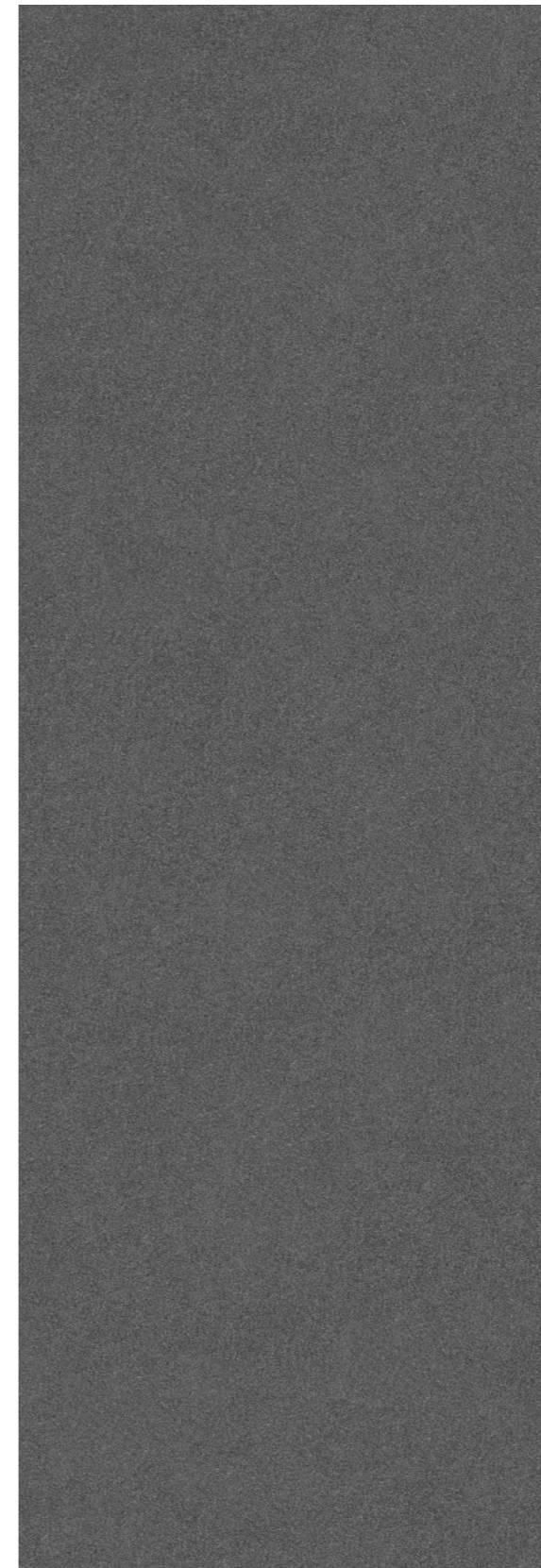
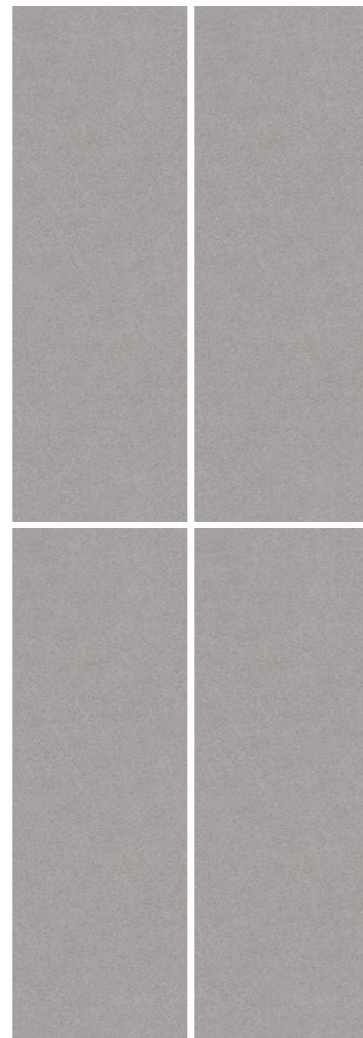


**SNP BURLY**  
HIGHGLOSS  
800 X 2400 MM

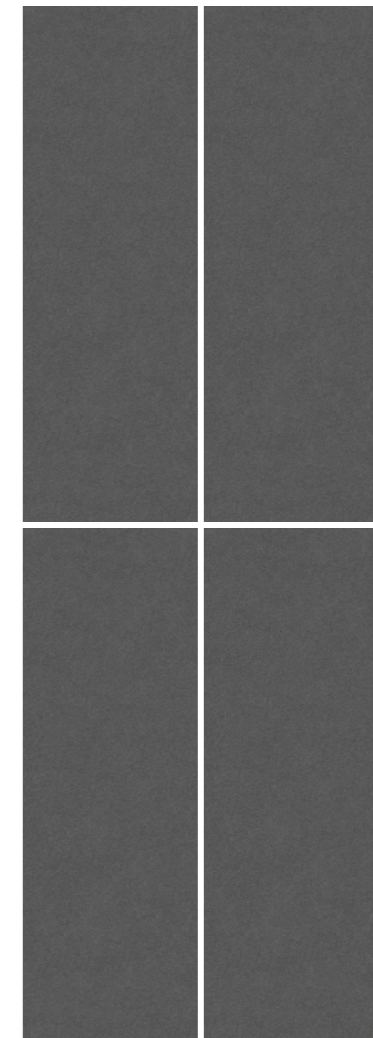




**SNP GREY**  
HIGHGLOSS  
800 X 2400 MM



**SNP BLACK**  
HIGHGLOSS  
800 X 2400 MM

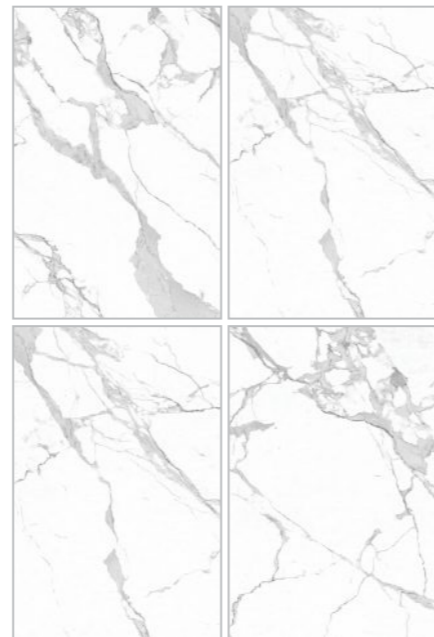




ROMA STATUARIO  
GLOSSY | 1200 X 1800 MM

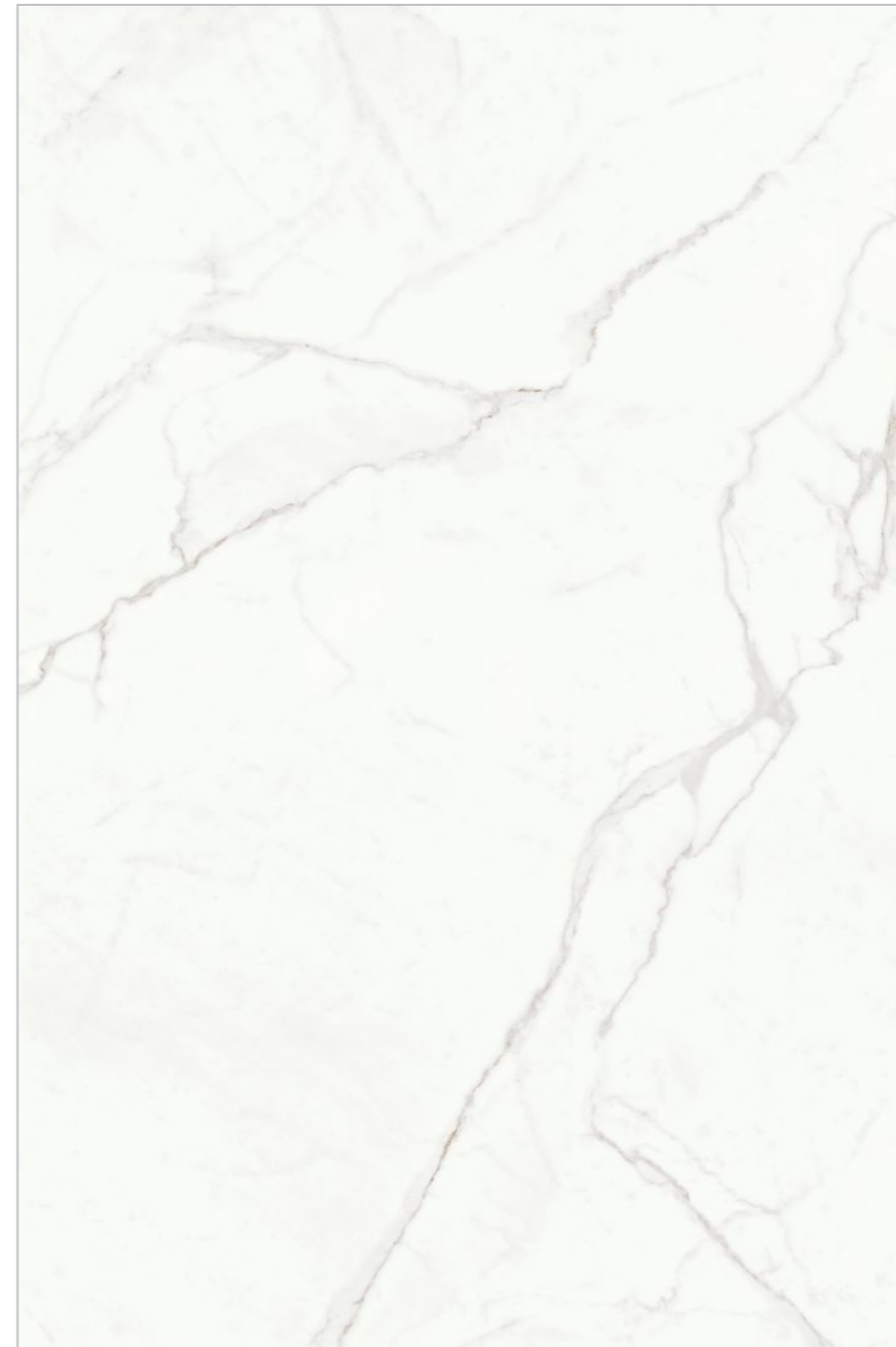
**ROMA STATUARIO**

GLOSSY  
1200 X 1800 MM



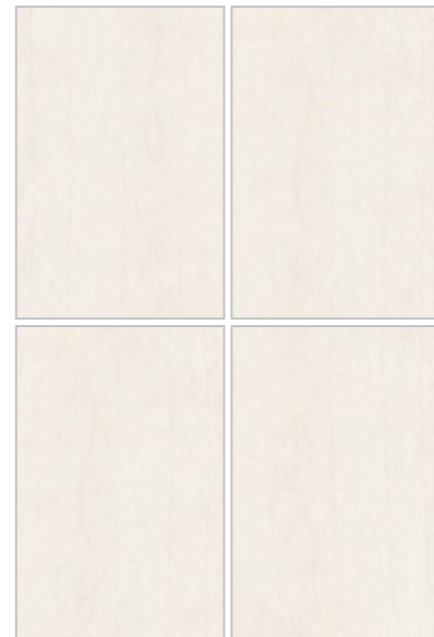
**BULGARY LIGHT**

GLOSSY  
1200 X 1800 MM



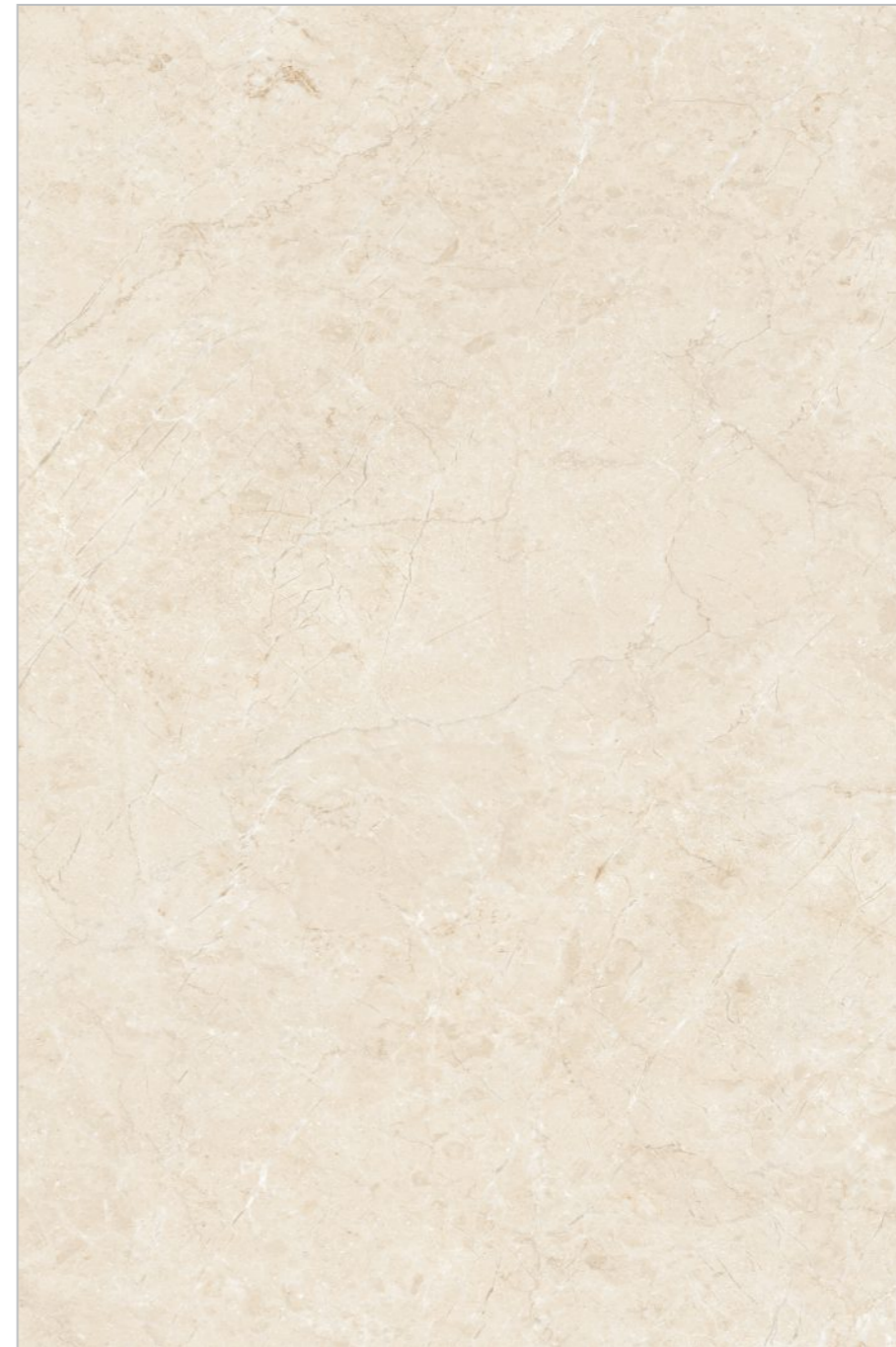
**REGAL BOTTOCHINO**

GLOSSY  
1200 X 1800 MM



**SILVIA MARFIL**

GLOSSY  
1200 X 1800 MM



**COSMO MARFIL**  
GLOSSY  
1200 X 1800 MM

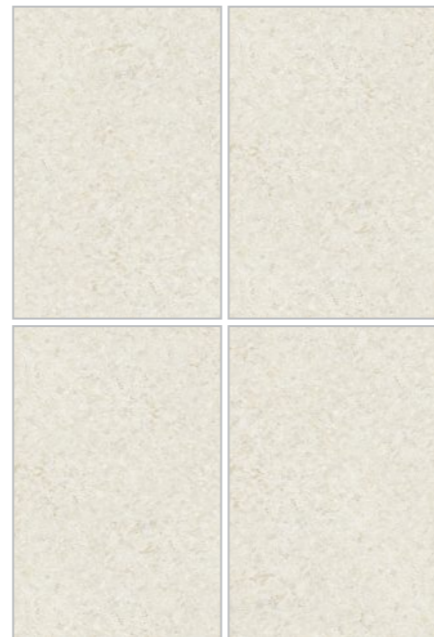


**DAINO CREMA**  
GLOSSY  
1200 X 1800 MM



**FLORENCE BEIGE**

GLOSSY  
1200 X 1800 MM



**SAFFRON WHITE**

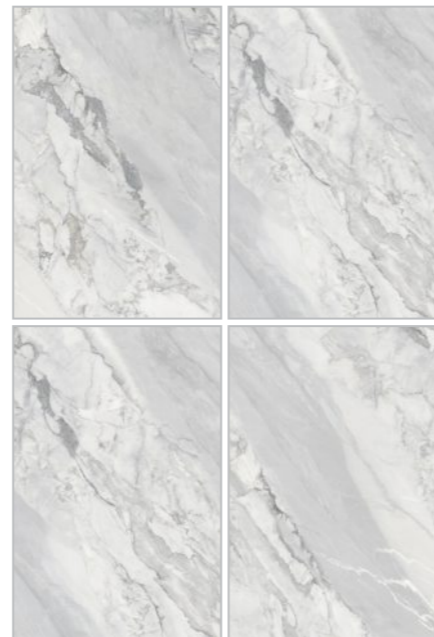
GLOSSY  
1200 X 1800 MM



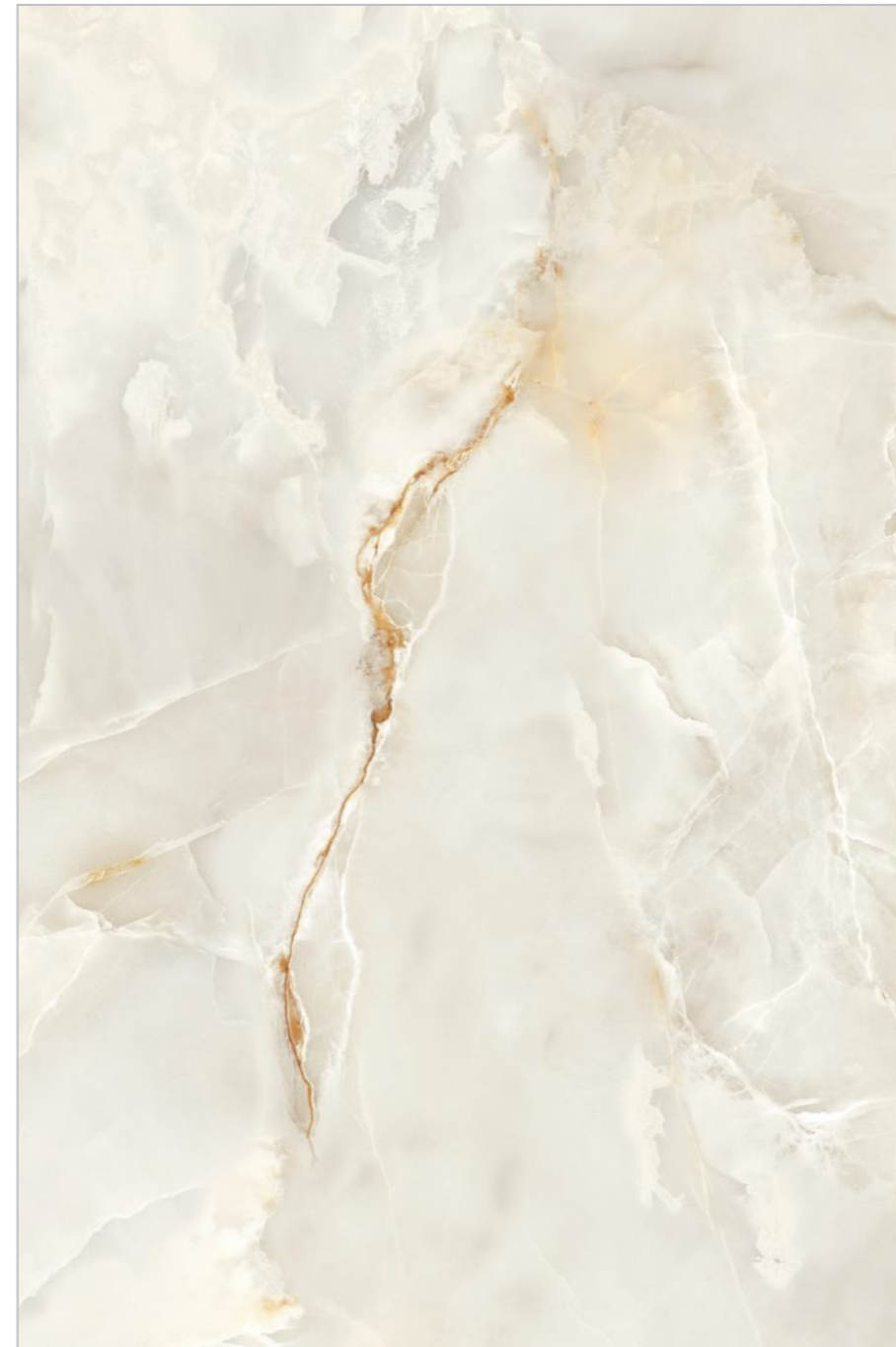


ONYX MINT  
HIGHGLOSS | 1200 X 1800 MM

**VOLTA GREY**  
HIGHGLOSS  
1200 X 1800 MM



**ONYX MINT**  
HIGHGLOSS  
1200 X 1800 MM



**OPERA BEIGE**  
HIGHGLOSS  
1200 X 1800 MM



**VERONA BEIGE**  
HIGHGLOSS  
1200 X 1800 MM



**WONDER GREY**  
HIGHGLOSS  
1200 X 1800 MM



**FOSSIL FOREST**  
DARK HIGHGLOSS  
1200 X 1800 MM



**STELLER SILVER**  
DARK HIGHGLOSS  
1200 X 1800 MM



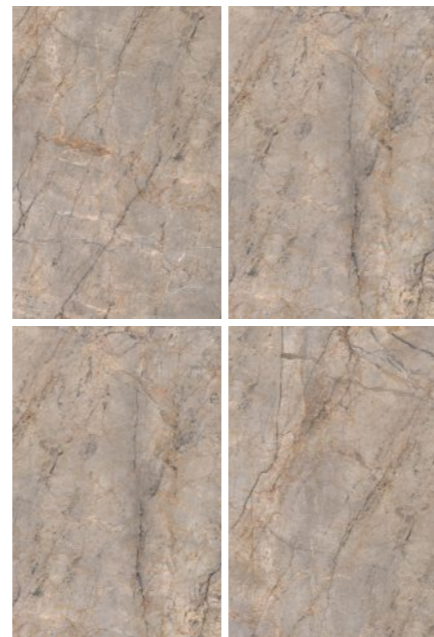
**OXFORD GREY**  
DARK HIGHGLOSS  
1200 X 1800 MM





WONDER GREY FROST  
FROST | 1200 X 1800 MM

**WILD FROST**  
FROST  
1200 X 1800 MM



**ARNADO GREY FROST**  
FROST  
1200 X 1800 MM



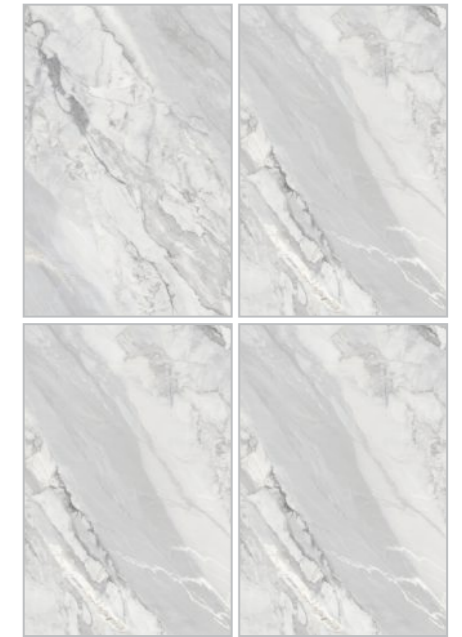
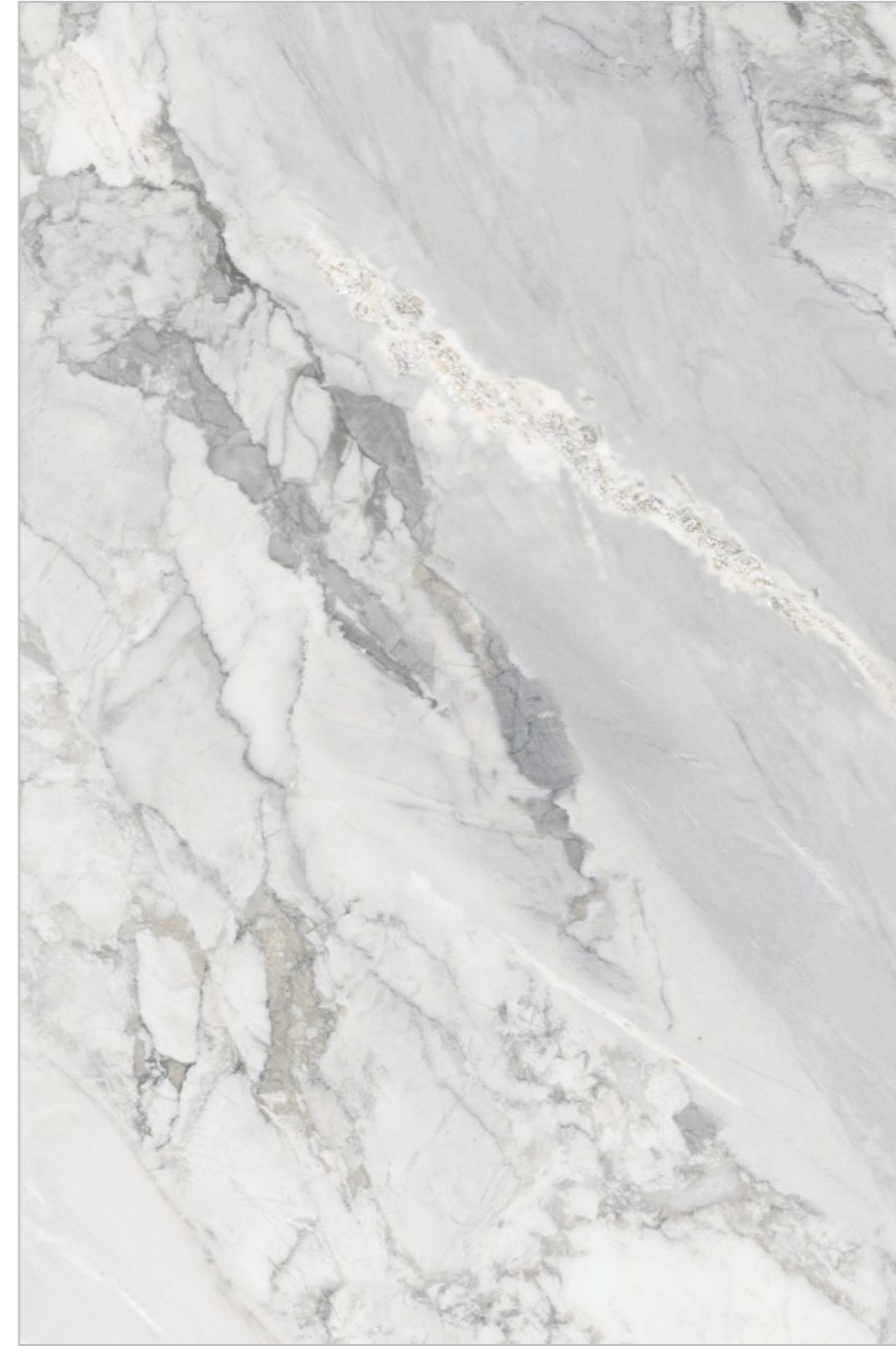
**WONDER GREY FROST**

FROST  
1200 X 1800 MM



**VOLTA GREY FROST**

FROST  
1200 X 1800 MM



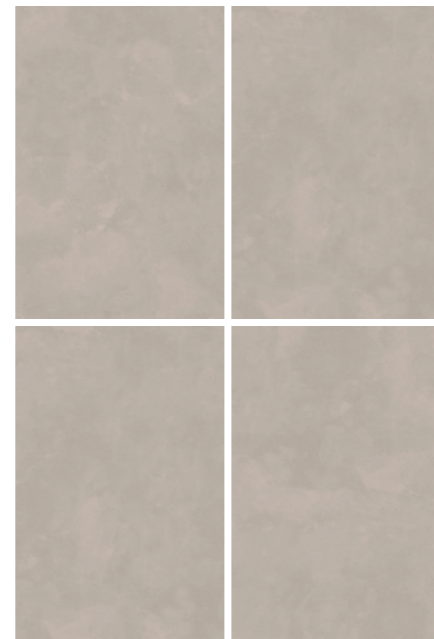
**OXFORD GREY FROST**  
FROST  
1200 X 1800 MM



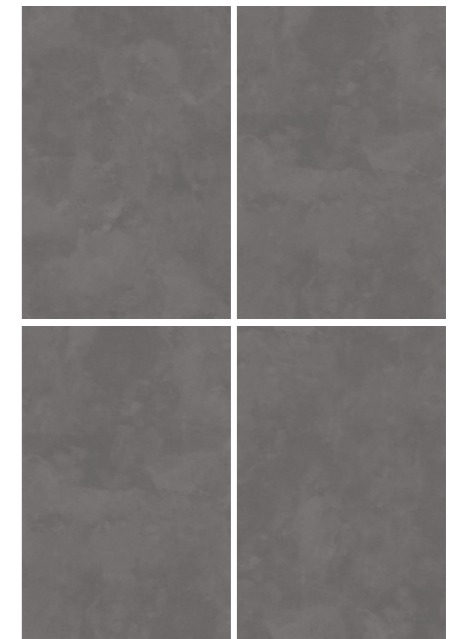


MACAU CREMA  
MACAU BLACK  
MATT WITH CARVING | 1200 X 1800 MM

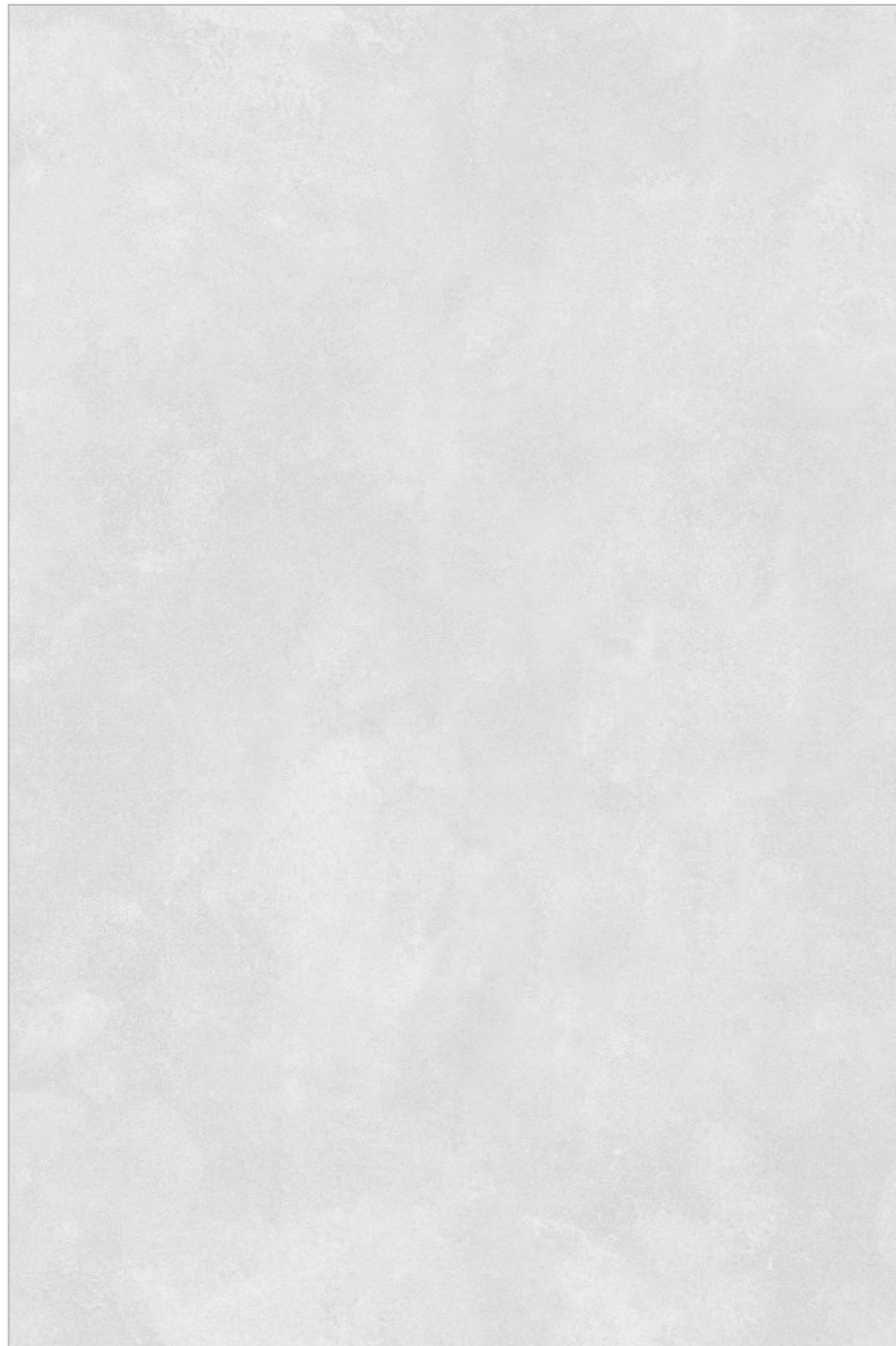
**MACAU CREMA**  
MATT WITH CARVING  
1200 X 1800 MM



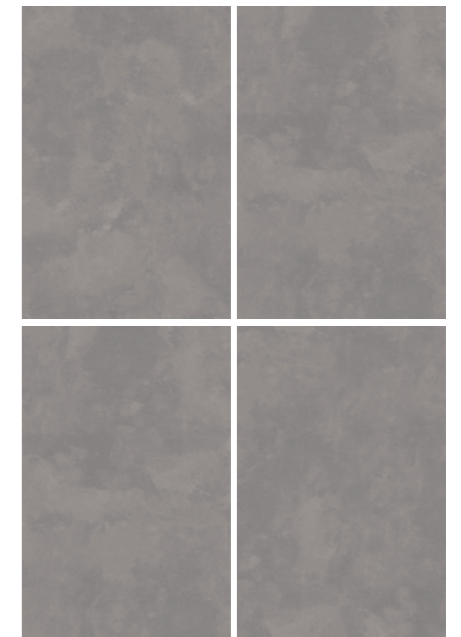
**MACAU BLACK**  
MATT WITH CARVING  
1200 X 1800 MM



**MACAU WHITE**  
MATT WITH CARVING  
1200 X 1800 MM



**MACAU GRIS**  
MATT WITH CARVING  
1200 X 1800 MM





**MACAU GRIS**  
MATT WITH CARVING | 1200 X 1800 MM

CHARACTERISTICS	TEST METHOD		B1A STD VALUES		GRAFITE VALUES	
			%	MM	%	MM
Dimension and surface quality	ISO 13006:2012(E)	IS 15622-2017, GROUP B1A, ES 0.08%				
Deviation In Lenght	ISO 10545-2	IS 13630 PART-1	± 0.6 %	± 2.0 mm	± 0.03 %	± 0.50 mm
Deviation In Width	ISO 10545-2	IS 13630 PART-1	± 0.6 %	± 2.0 mm	± 0.03 %	± 0.50 mm
Deviation In Width	ISO 10545-2	IS 13630 PART-1	± 0.6 %	± 2.0 mm	± 0.03 %	± 0.50 mm
Deviation In Thickness	ISO 10545-2	IS 13630 PART-1	± 5.0 %	± 0.5 mm	± 3.50 %	± 0.30 mm
Streightness Of Sides	ISO 10545-2	IS 13630 PART-1	± 0.5 %	± 1.5 mm	± 0.02 %	± 0.35 mm
Rectangularity	ISO 10545-2	IS 13630 PART-1	± 0.5 %	± 2.0 mm	± 0.05 %	± 0.90 mm
Surface Flatness	ISO 10545-2	IS 13630 PART-1	± 0.5 %	± 2.0 mm	± 0.06 %	± 1.20 mm
Surface Quality 95% Free From Visible Defects	ISO 105451-2	IS 13630 PART-1	±95%		Conform	
<b>PHYSICAL PROPERTY</b>						
WA%	ISO 10545-3	IS 13630 PART-2	Eb ≤ 0.5 % Individual maximum 0.6%		Conform	
MOR N/MM2	ISO 105451-4	IS 13630 PART-6	Min 35 Indi. min 32		Min 42 Indi. min 32	
Breaking Strength N For Thick > 7.5 Mm	ISO 105451-4	IS 13630 PART-6	>1300		>2000 (on 600x600)	
Impact Resistance - Co - Efficient Of	ISO 105451-5	IS 13630 PART-14	Not Compulsory		>0.55	
Deep Abrasion Resistance For Unglazed Tiles	ISO 105451-6	IS 13630 PART-12	Max 175 MM³		Only For Unglazed Tiles	
Resistance To Surface Abrasion - Glazed Tiles	ISO 105451-7	IS 13630 PART-11, CLASS-2	Report Abrasion Class		Min. Class 3 or as per product required	
Co- Efficient Of Linear Thermal Expansion	ISO 105451-8	IS 13630 PART-4	Ambient to 100°C		Max 6x10	
Thermal Stock Resistance 15/145 C 10 Cycle	ISO 105451-9	IS 13630 PART-5	Not Compulsory		10 Cycle min.	
Moisture Expansion MM/M	ISO 105451-10	IS 13630 PART-3	Not Compulsory		Max 0.02 MM/M	
Resistance To Cracking	ISO 105451-11	IS 13630 PART-9	Required		4 Cycle Pass, @ 7.5 Kg Steam Pressure	
Frost Resistance	ISO 105451-12	IS 13630 PART-10	Required		Conform	
Resistance To House Hold Chemicals And Swimming Pool Salts : Glazed Tiles	ISO 105451-13	IS 13630 PART-7	Min GB		Min GB	
Scratch Hardness Of Surface	ISO 105451-13	IS 13630 PART-13	Min 5		Min 5, or as required	
Bulk Density Gm/cc		IS 13630 PART-2	2.20 Min		>2.25	
<b>CHEMICAL PROPERTY</b>						
Resistance To Stain Glazed Tiles	ISO 105451-14	IS 13630 PART-8,	Min Class 3		Conform	
Lead And Cadmium Release - Glazed Tiles	ISO 105451-15	CLASS -1	Not Compulsory		Not Compulsory	
Small Colour Differences	ISO 105451-16		Not compulsory /Plain Coloured		Not compulsory /Plain Coloured	

**PACKING DETAIL**

SIZE	PCS/BOX	WEIGHT(APPROX)	THICKNESS (APPROX)	SQ./BOX
800 x 2400 MM	1	64 Kg.	15MM	20.67 sq.ft
1200 x 1800 MM	2	90 Kg.	9MM	46.50 sq.ft