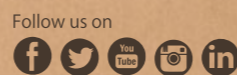




The Art Of
N A T U R E



Corp. Office:
202, Dev Arc, Opp. Iskon Temple,
S.G. Highway, Ahmedabad 380 015.
Gujarat, INDIA.
Ph.: +91 79 6612 5541 /, Fax: +91 79 6612 5600
Email: contact@bonzer7.com, info@bonzer7.com
www.bonzer7.com
Toll Free No. 1800 123 4475



NANO TECH
MULTICHARGE | SOLUBLE SALT
800x800mm | 600x600mm
600x600mm

DURABON
DIGITAL PARKING TILES
400x400mm

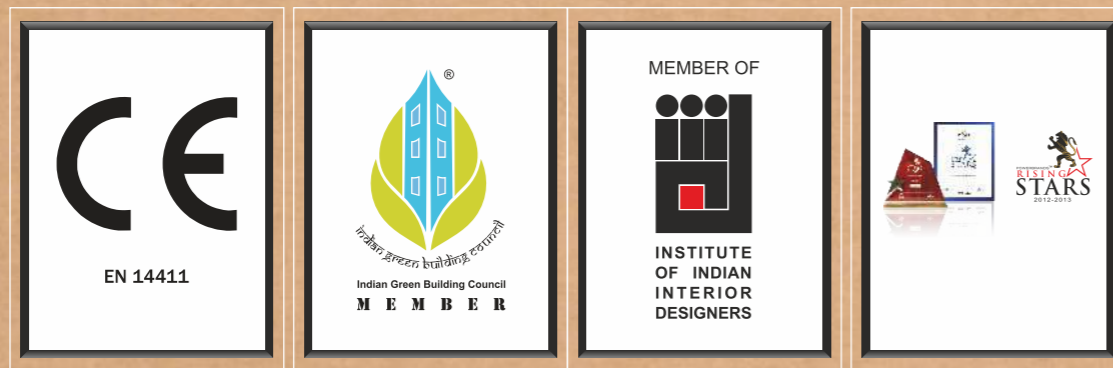
Make elegance
YOUR AMBIANCE

About Us

With our unvarying focus towards creating a comprehensive collection of formidable products and exceptional service, we have fastly become one of the front-runners in the ceramic space. We aspire to use our expertise and ardor to turn your dreams into reality.

We are always striving to upgrade our technology to manufacture superior products. At Bonzer7, we follow the adage 'Inspired By You'. It is a priority for us to meet the expectations of our customers fittingly. Our efforts are directed towards providing our customers new designs with unmatched quality.

A testament to our 'customer first approach' is our happy customers. We have become the preferred brand of country's prime architects, interior designers, custom home builders, developers and astute homeowners in a short span of time.



QUALITY THAT IS STAMPED BY AUTHORITIES OUR CERTIFICATIONS AND ACCREDITATIONS

Bonzer7 has prioritized quality in all its endeavors and the same has been recognized by authorities. We have received certain certifications that boast our adherence to market standards and established procedures. We are also the proud recipients of 'Power Brands Rising Star' - a recognition bestowed upon us by Indian customers.



NANO TECH
MULTICHARGE | SOLUBLE SALT
800x800mm | 600x600mm
600x600mm

DURABON
DIGITAL PARKING TILES
400x400mm

Glossy tiles have shiny surfaces and have an enamel coating that reflects light. Glossy Tiles are ideal for small areas, as they make any area look brighter and more spacious. ... These tiles are available in 800x800mm, 600x600mm & 400x400mm.

Matt finish tiles are perfect for imparting a traditional look to any space. Matt finish tiles are a preferred material for outdoor applications due to their anti-slip feature and durability.

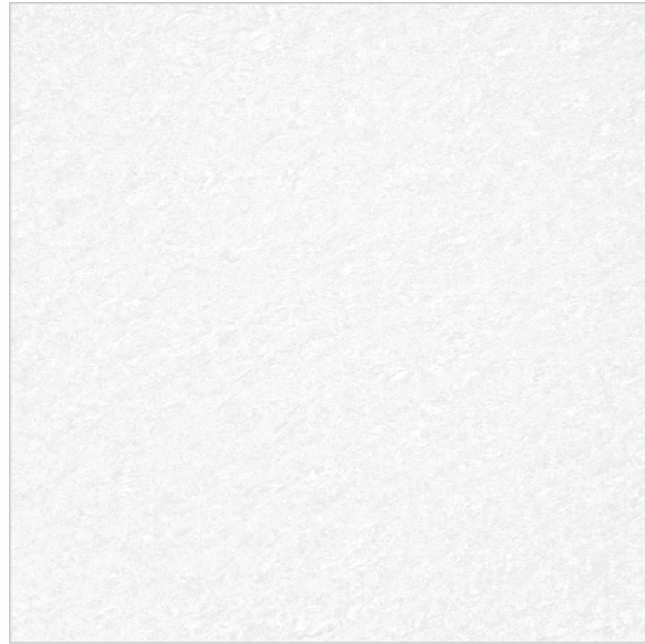
- Wall Tiles
- Floor Tiles
- Glossy
- Matt
- Domestic
- Digital
- Correct Rectified
- Interior
- Commercial
- Random



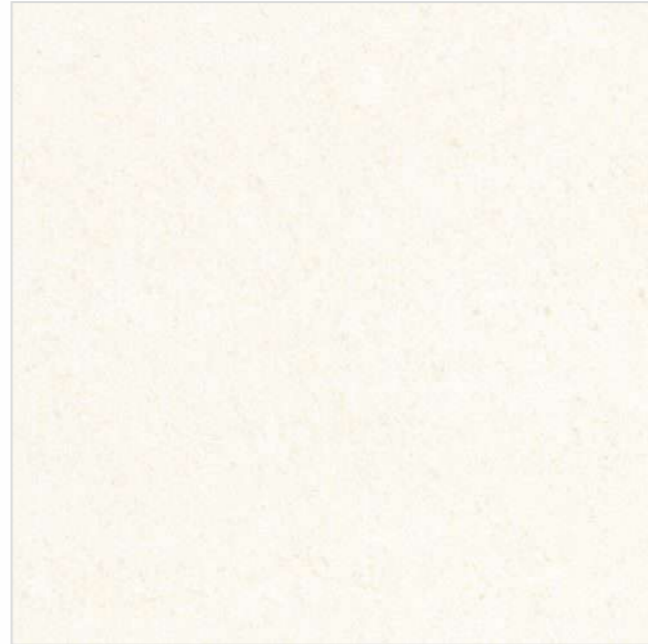
NANO[®] TECH
MULTICHARGE
800x800mm

FINISH:
GLOSSY

Tile Shown: Velvet Grey



ULTRA WHITE



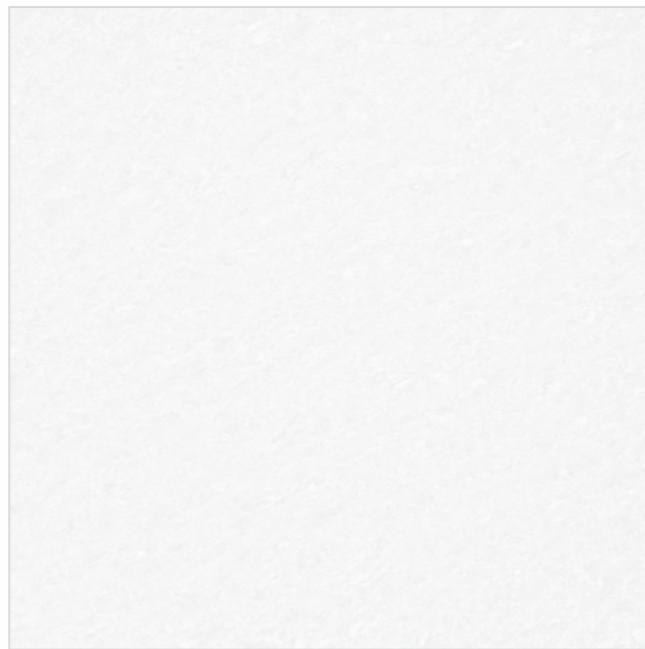
ULTRA YELLOW



SHINE YELLOW



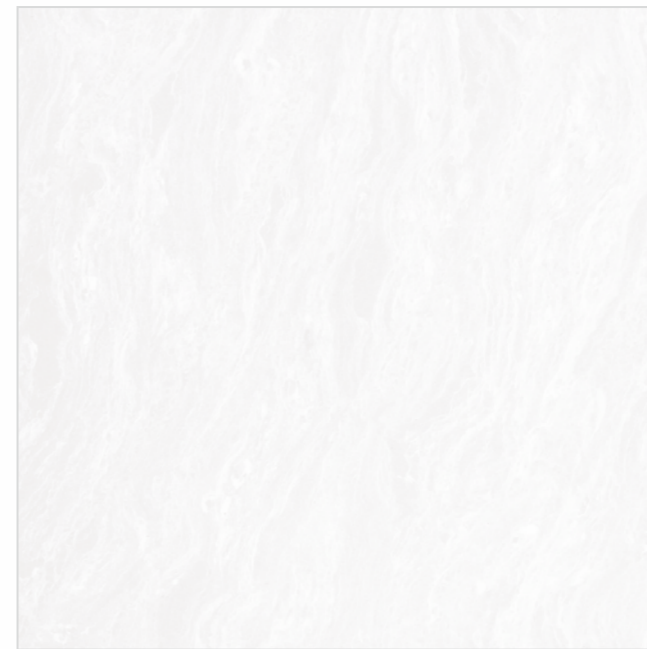
SHINE BLACK



BRANCOS WHITE



SHINE WHITE



VELVET WHITE



VELVET YELLOW



VELVET GREY



VELVET BROWN



VELVET FIRE



Tile Shown: Velvet Brown

NANO[®] TECH
MULTICHARGE
600x600mm

FINISH:
GLOSSY

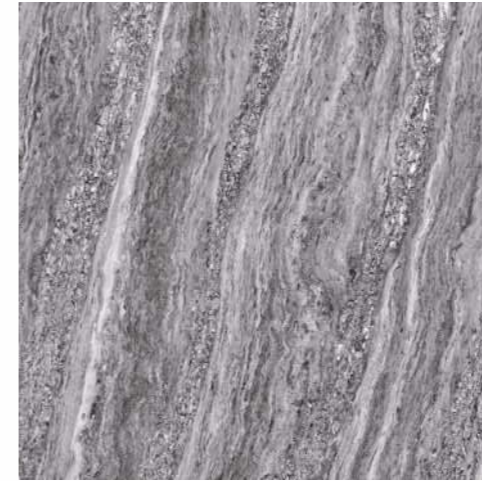
Tile Shown: Shine Brown & Shine Yellow



SHINE WHITE



SHINE YELLOW



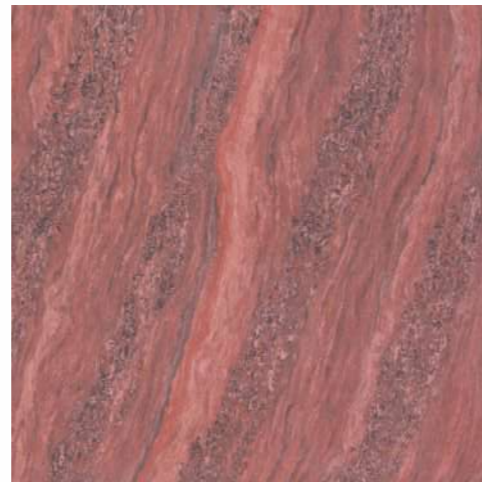
SHINE GREY



VELVET WHITE



SHINE BROWN



SHINE FIRE



VELVET YELLOW



VELVET BROWN



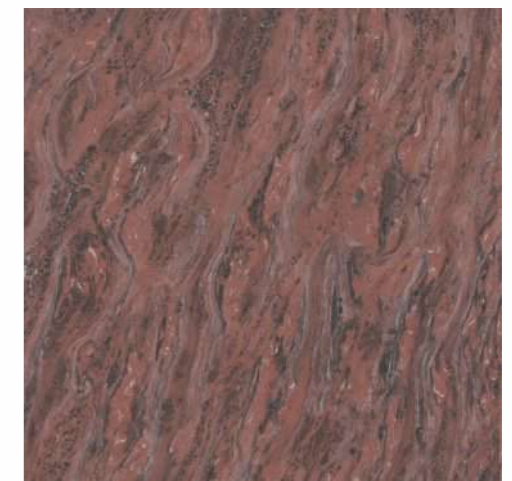
SHINE FUSION



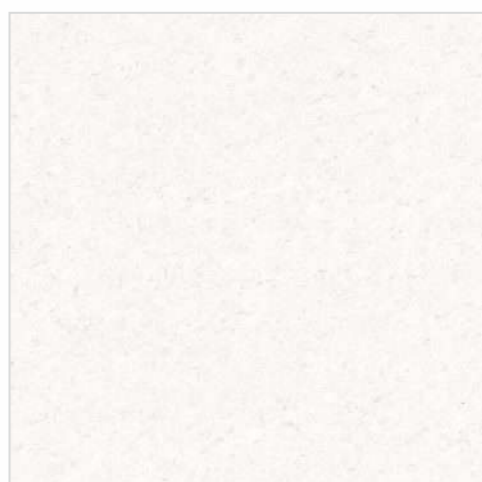
SHINE BLACK



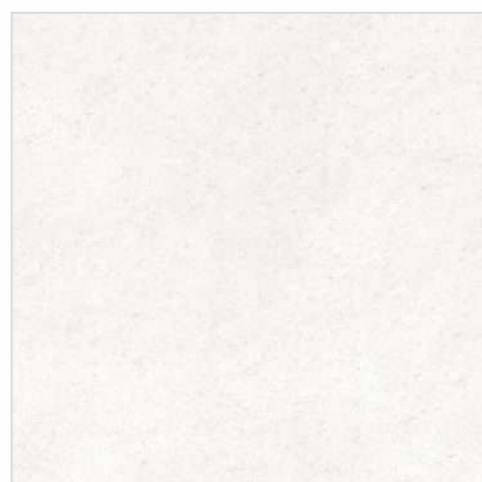
VELVET GREY



VELVET FIRE



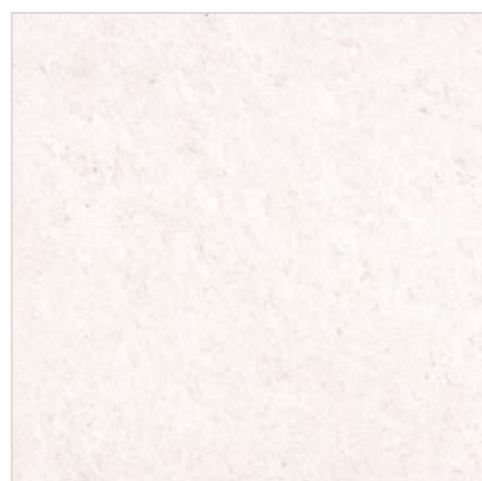
SUPER GOLD WHITE



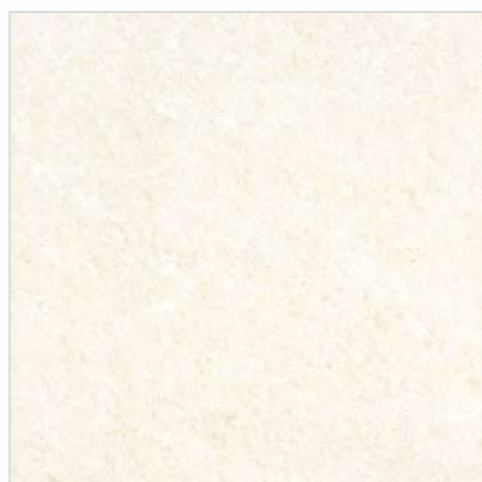
GOLD WHITE



GOLD BEIGE



GOLD PINK



GOLD YELLOW



GOLD GRIS



GOLD DARK GREY



DIAMOND BLACK



GOLD GIALIO



GOLD FIRE



GOLD BROWN



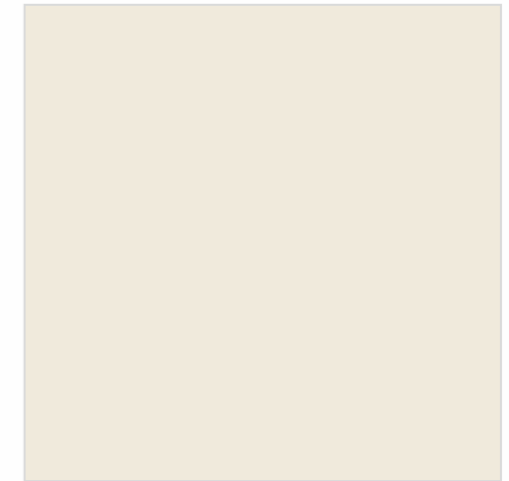
MAGIC ASTRAL



MAGIC CLOUDY



MAGIC WOODDEX



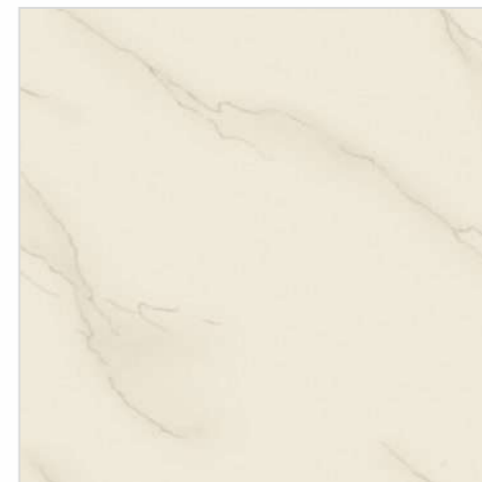
MAGIC ROYAL CREMA



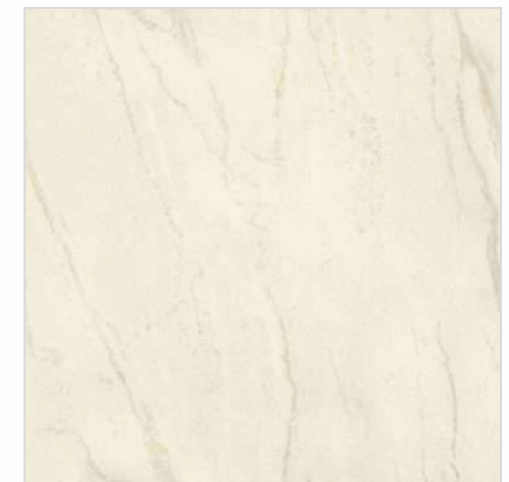
MAGIC FEATHER



MAGIC MARBELLA



MAGIC ATHENS



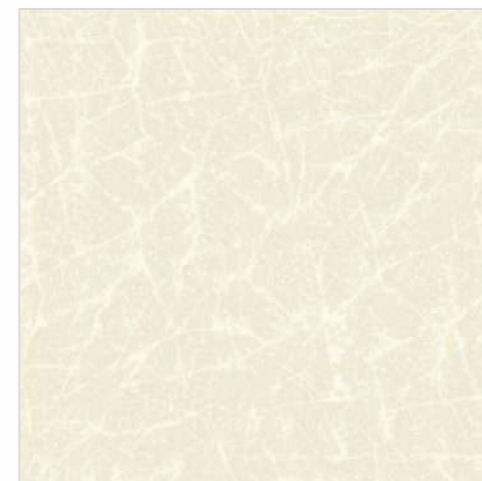
MAGIC MOGANO



MAGIC SANDAL



MAGIC CAPRI



MAGIC ASTON



MAGIC CRETA

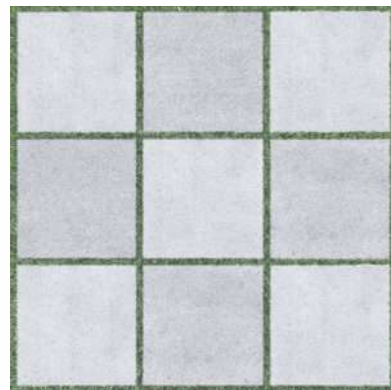
DURABON

DIGITAL PARKING TILES

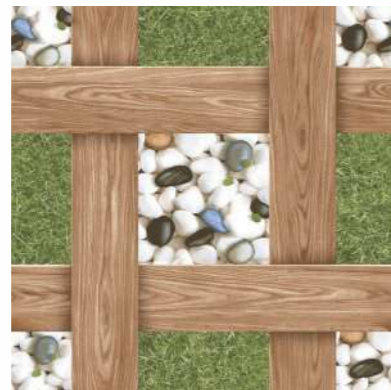
400x400mm

FINISH:
SATIN

Tile Shown: Multistone Brown



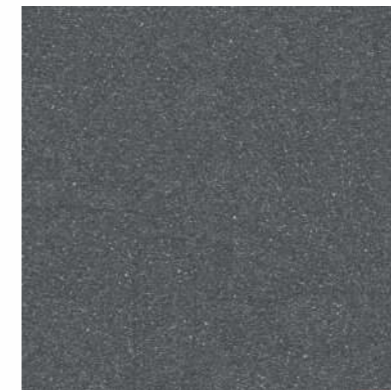
HELMER GREY NEW



DEVIN BROWN NEW



BRINZO GREY NEW



BLING BLACK NEW



BLING BROWN NEW



FLUX TEAK WOOD NEW



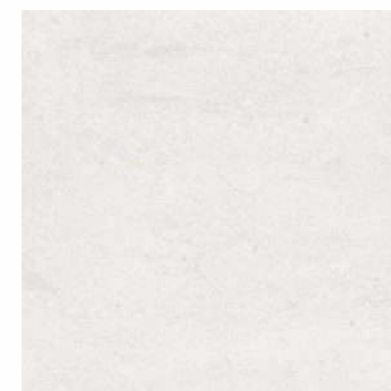
CORIA CREMA NEW



CORIA BROWN NEW



ABRIL NERO NEW



ELISE BIANCO NEW



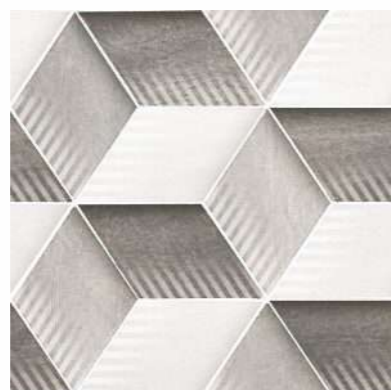
ELISE GREY DECOR NEW



ELISE GREY NEW



PROVENZA BROWN NEW



PROVENZA GRIS NEW



RANGER NERO NEW



LOGAN BIANCO NEW



LOGAN GREY DECOR NEW



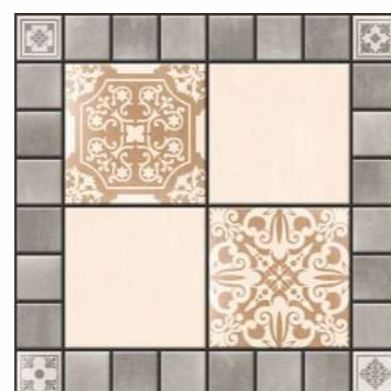
LOGAN GREY NEW



TREVER BROWN NEW



TREVER GRIS NEW



FENESTA CREMA NEW



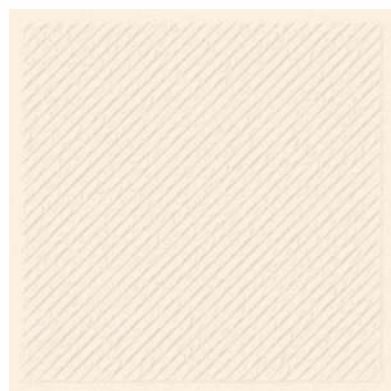
BURNET BROWN NEW



COSTA BROWN NEW



CRUZAR BLUE NEW



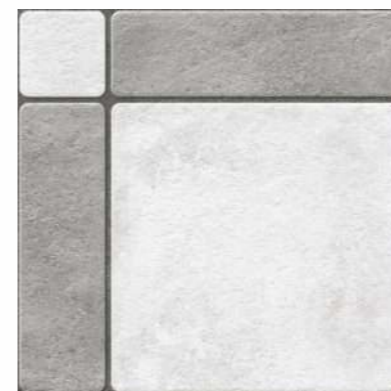
PETRA CREMA NEW



PETRA BROWN NEW



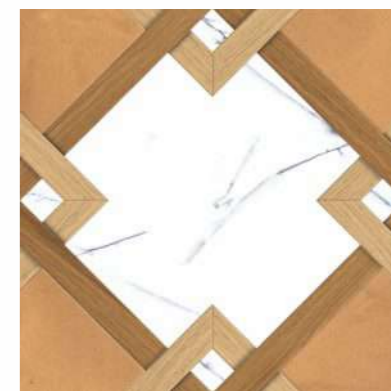
PETRA BIANCO NEW



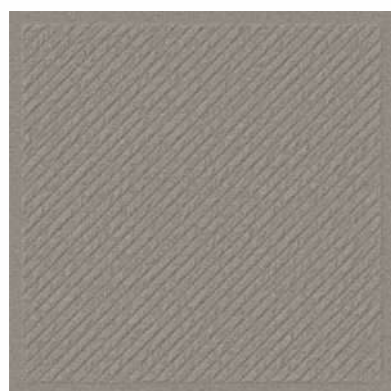
FLAIX GREY NEW



FLAIX GREY DECOR NEW



TOSCANA BIANCO



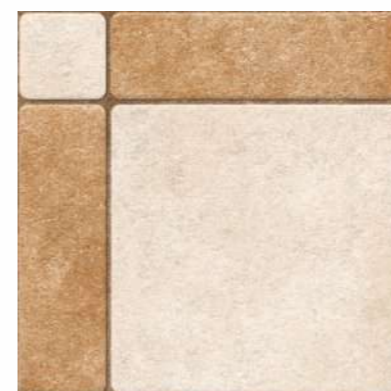
PETRA NERO NEW



SPINAL IVORY NEW



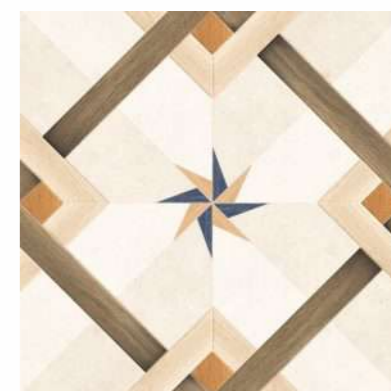
SPINAL BEIGE NEW



FLAIX BROWN NEW



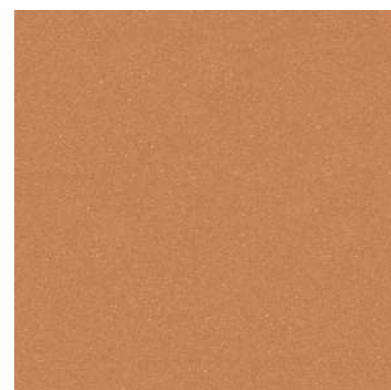
FLAIX BROWN DECOR NEW



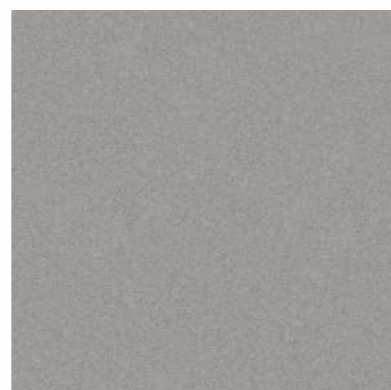
STAR WOOD



SPINAL CREMA NEW



SPINAL BROWN NEW



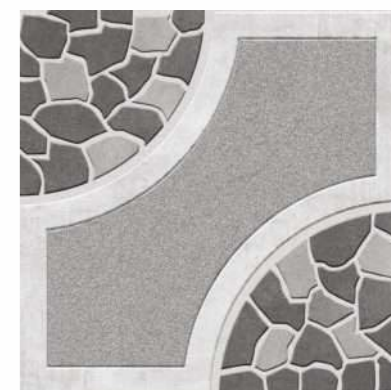
SPINAL NERO NEW



MULTISTONE GREY



MULTISTONE BROWN



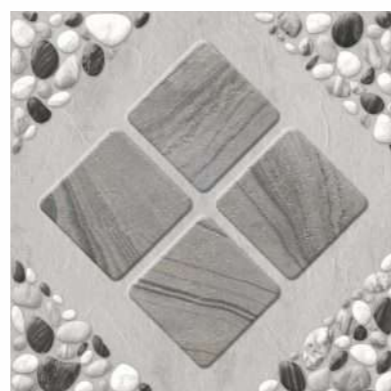
ARROW STONE GREY



LITORAL BIANCO NEW



LITORAL BROWN NEW



LITORAL GREY NEW



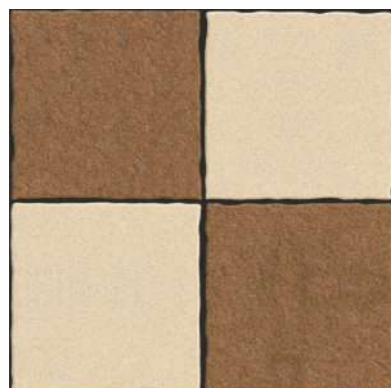
STONE QUBE



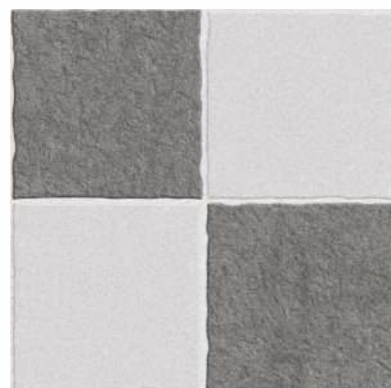
STONE BROWN



ARROW STONE BROWN



ROUGH STONE BEIGE



ROUGH STONE GREY



RECTO STONE BROWN



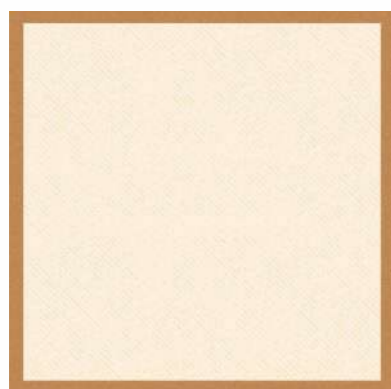
ONDEE BLUE



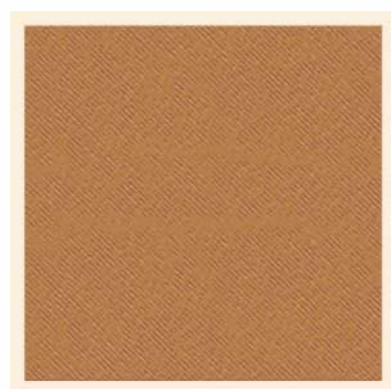
ONDEE GREY



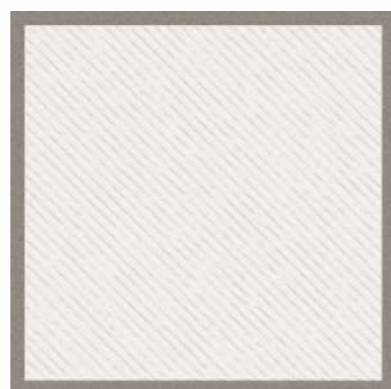
PRADA MOSAIC



PAVILLION BEIGE



PAVILLION BROWN



PAVILLION BIANCO



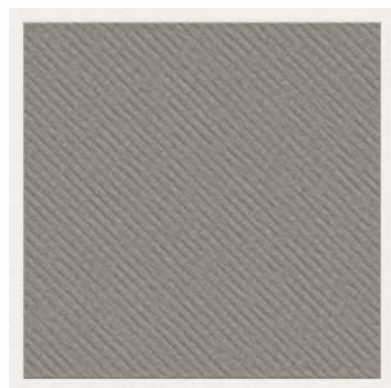
MASHROOM BLUE



MASHROOM BEIGE



MASHROOM STONE NATURAL



PAVILLION GREY



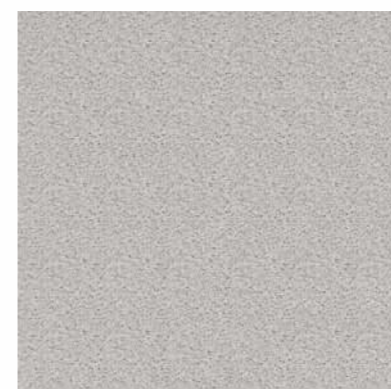
SPELLO GREY



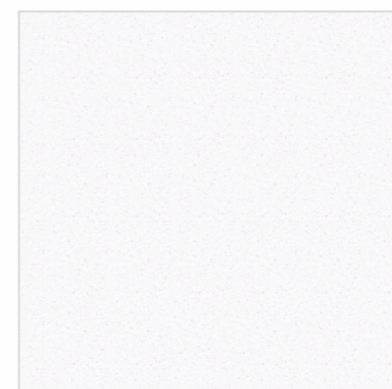
SPELLO BIANCO



SPELLO CAMEL



SAND STONE GREY



SAND STONE BIANCO



SAND STONE BEIGE

CHARACTERISTICS				
DIMENSION & SURFACE QUALITY	Requirement as per ISO 13006:2012 Gr Bla Eb ≤0.5%	Requirement as per IS 15622:2017 Gr Bla E ≤0.08%	BONZER7 Value	Test Method
Deviation In Length & Width	± 0.6%	± 0.1%	± 0.1%	ISO 10545 Part-2 IS 13630 Part-1
Deviation In Thickness	± 5.0%	± 5.0%	± 3.0%	ISO 10545 Part-2 IS 13630 Part-1
Straightness of Edge	± 0.5%	± 0.1%	± 0.1%	ISO 10545 Part-2 IS 13630 Part-1
Rectangularity	± 0.5%	± 0.1%	± 0.1%	ISO 10545 Part-2 IS 13630 Part-1
Surface Flatness	± 0.5%	± 0.5%	± 0.2%	ISO 10545 Part-2 IS 13630 Part-1
Water Absorption % By Wt.	≤ 0.5, Ind 0.6 Max.	≤ 0.08, Ind. 0.1 Max.	≤ 0.05%	ISO 10545 Part-3 IS 13630 Part-2
Flexural Strength (MOR) In N/mm ²	Avr.35, Ind. Min. 32	Avr.35, Ind. Min. 32	≥ 40 N/mm ²	ISO 10545 Part-4 IS 13630 Part-6
Breaking Strength in N	1300 N Min.	1300 N Min.	> 2000 N	ISO 10545 Part-4 IS 13630 Part-6
Bulk Density (gm/cc)	2.0 Min.	2.2 Min.	≥ 2.2	ISO 10545 Part-3 IS 13630 Part-2
Impact Resistance	> 0.40	> 0.55	> 0.55	ISO 10545 Part-5 IS 13630 Part-14
Resistance to Deep Abrasion	175mm ³ Max.	140mm ³ Max.	≤ 120mm ³	ISO 10545 Part-7 IS 13630 Part-11
Thermal Shock Resistance	10 cycle Min.	10 cycle Min.	No Damage after 10 cycles	ISO 10545 Part-9 IS 13630 Part-5
Moisture Expansion in mm/M	Test Method Available	0.02 Max.	Nil	ISO 10545 Part-10 IS 13630 Part-3
Frost Resistance	Resistance	Resistance	Resistance	ISO 10545 Part-12 IS 13630 Part-10
Moh'S Scratch Hardness	Min. 5	Min. 5	Min. 5	EN 101 IS 13630 Part-13
Resistance To House hold Chemicals	No Damage	Min Class AA	Class AA	ISO 10545 Part-13 IS 13630 Part-8
Resistance To Acids & Alkalis (Except HF Acid)	No Damage	Min Class AA	Class AA	ISO 10545 Part-13 IS 13630 Part-8
Stain Resistance	Min Class 3	Min Class 1	Resistance	ISO 10545 Part-14 IS 13630 Part-8

CHARACTERISTICS				
(A) DIMENSION & SURFACE QUALITY	Requirement as per ISO 13006:2012 Gr Bla Eb ≤0.5%	Requirement as per IS 15622:2017 Gr Blb 0.08% ≤E<3.0%	BONZER7 Value	Test Method
Deviation In Length & Width	± 0.6%	± 0.1%	± 0.1%	ISO 10545 Part-2 IS 13630 Part-1
Deviation In Thickness	± 5.0%	± 5.0%	± 3.0%	ISO 10545 Part-2 IS 13630 Part-1
Straightness of Edge	± 0.5%	± 0.1%	± 0.1%	ISO 10545 Part-2 IS 13630 Part-1
Rectangularity	± 0.5%	± 0.1%	± 0.1%	ISO 10545 Part-2 IS 13630 Part-1
Surface Flatness	± 0.5%	± 0.5%	± 0.2%	ISO 10545 Part-2 IS 13630 Part-1
Water Absorption % By Wt.	≤ 0.5, Ind 0.6 Max.	0.08% ≤ E ≤ 3.0, Ind 3.3 Max.	≤ 0.5	ISO 10545 Part-3 IS 13630 Part-2
Flexural Strength (MOR) In N/mm ²	Avr.30, Ind. Min. 27	Avr.30, Ind. Min. 27	≥ 35 N/mm ²	ISO 10545 Part-4 IS 13630 Part-6
Breaking Strength in N	1300 N Min.	1100 N Min.	> 1800 N	ISO 10545 Part-4 IS 13630 Part-6
Resistance to Surface Abrasion	Manufacturer to State Class	PEI II Min	Min. PEI IV	ISO 10545 Part-7 IS 13630 Part-11
Thermal Shock Resistance	10 cycle Min.	10 cycle Min.	No Damage after 10 cycles	ISO 10545 Part-9 IS 13630 Part-5
Moisture Expansion in mm/M	Test Method Available	0.02 Max.	Nil	ISO 10545 Part-10 IS 13630 Part-3
Crazeing Resistance	Required	4 Cycle at 7.5 bar Min.	Resistance	ISO 10545 Part-11 IS 13630 Part-9
Frost Resistance	Resistance	Resistance	Resistance	ISO 10545 Part-12 IS 13630 Part-10
Moh'S Scratch Hardness	Min. 5	Min. 5	Min. 7	EN 101 IS 13630 Part-13
Resistance To House hold Chemicals	No Damage	Min Class AA	Class AA	ISO 10545 Part-13 IS 13630 Part-8
Resistance To Acids & Alkalis (Except HF Acid)	No Damage	Min Class AA	Class AA	ISO 10545 Part-13 IS 13630 Part-8
Stain Resistance	Min Class 3	Min Class 1	Class 1	ISO 10545 Part-14 IS 13630 Part-8

MULTICHARGE PACKING DETAILS:

Size. (MM)	Thickness	Weight (Kg.)	No. Of Tiles/set	Area Sq.mtr/box
800x800mm	8.8 mm	37.50	3	1.92m ²
600x600mm	8.4 mm	26.00	4	1.44m ²

SOLUBLE SALT PACKING DETAILS:

Size. (MM)	Thickness	Weight (Kg.)	No. Of Tiles/set	Area Sq.mtr/box
600x600mm	8.2	22.50	4	1.44m ²

PACKING DETAILS:

Size. (MM)	Thickness	Weight (Kg.)	No. Of Tiles/set	Area Sq.mtr/box
400x400mm	12 mm	18.5 Kg.	5 Pcs	0.80 M ²

- *Notes:**
- All technical specifications in this catalogue are for premium grade material only.
 - SHADE/SIZE VARIATIONS** are inherent characteristics of ceramics. Certain products purposely have variations which are part of design & process. The same have been indicated.
 - It is recommended to blend tiles by mixing tiles from various boxes & check for natural hue before fixing the tiles.
 - It is recommended to check the tiles before laying/fixing. Quality standards cover only 1st/premium quality only.
 - Company's liability is limited to material that has not been laid.
 - NO COMPLIANT SHALL BE ENTERTAINED ON TILES ALREADY FIXED/LAID.**
 - The liability is also limited to the material supplied by the company; no other claim is entertained under any circumstances.
 - No complaint is entertained on decoration done on tiles, other than the ones done by BONZER 7 TILES

GENERAL NOTE: ANY COMPLAINT MUST BE BROUGHT TO THE COMPANY'S NOTICE WITHIN 10 DAYS OF PURCHASE & BEFORE FIXING OF TILES.

How to avoid defects & complaints :

- Use good quality Tiles
- Choose good quality Tiles, with proper consideration to area intended of usage.
- Avoid careless laying of Tiles
- Avoid poor maintenance-for instance, by cleaning with strong chemicals or with abrasive equipment e.g. metallic scrubber
- Always keep Tiled area clean & ensure dusting/mopping regularly
- Put Doormats/Foot-mats at all strategic locations to avoid loose debris/dust from entering the Tiled area

APPLICATION



DISCLAIMER : Bonzer 7 Tiles reserves the right to delete & amend either totally or partially, any of the colors, shapes, sizes, references and other technical specifications contained in this catalogue at anytime. The colors shown of tiles in this catalogue are purely illustrative and limited to printing process. Please refer actual sample before final selection. The details of sizes, colors, references should be verified for typographical errors. All complaints need to be reported within 10 days of purchase. Always follow instructions to avoid complaint due to bad masonry.

- *Notes:**
- All technical specifications in this catalogue are for premium grade material only.
 - SHADE/SIZE VARIATIONS** are inherent characteristics of ceramics. Certain products purposely have variations which are part of design & process. The same have been indicated.
 - It is recommended to blend tiles by mixing tiles from various boxes & check for natural hue before fixing the tiles.
 - It is recommended to check the tiles before laying/fixing. Quality standards cover only 1st/premium quality only.
 - Company's liability is limited to material that has not been laid.
 - NO COMPLIANT SHALL BE ENTERTAINED ON TILES ALREADY FIXED/LAID.**
 - The liability is also limited to the material supplied by the company; no other claim is entertained under any circumstances.
 - No complaint is entertained on decoration done on tiles, other than the ones done by BONZER 7 TILES

GENERAL NOTE: ANY COMPLAINT MUST BE BROUGHT TO THE COMPANY'S NOTICE WITHIN 10 DAYS OF PURCHASE & BEFORE FIXING OF TILES.

How to avoid defects & complaints :

- Use good quality Tiles
- Choose good quality Tiles, with proper consideration to area intended of usage.
- Avoid careless laying of Tiles
- Avoid poor maintenance-for instance, by cleaning with strong chemicals or with abrasive equipment e.g. metallic scrubber
- Always keep Tiled area clean & ensure dusting/mopping regularly
- Put Doormats/Foot-mats at all strategic locations to avoid loose debris/dust from entering the Tiled area

DISCLAIMER : Bonzer 7 Tiles reserves the right to delete & amend either totally or partially, any of the colors, shapes, sizes, references and other technical specifications contained in this catalogue at anytime. The colors shown of tiles in this catalogue are purely illustrative and limited to printing process. Please refer actual sample before final selection. The details of sizes, colors, references should be verified for typographical errors. All complaints need to be reported within 10 days of purchase. Always follow instructions to avoid complaint due to bad masonry.