

[**≡ FASTRACK**
COLLECTION]





ESTABLISHED IN 2008 WITH AN AIM TO CREATE MEANINGFUL EXSTENCE FOR ITS PATRONS AND TO CREATE A STATURE WHERE WE SYMBOLIZE GLOBAL INNOVATION AND CREATIVITY.

FOOTPRINTS

Presence in **60+** countries

1000+ Domestic Dealers

100+ Luxuria Dealers

2400+ Sub-Dealers

11 Experience Centers

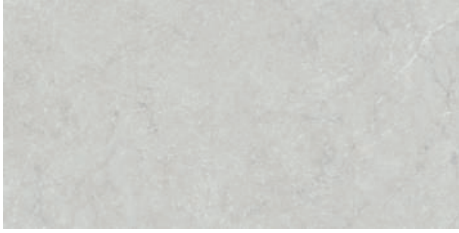
Overseas Office & Research Center in **ITALY**

PHILOSOPHY

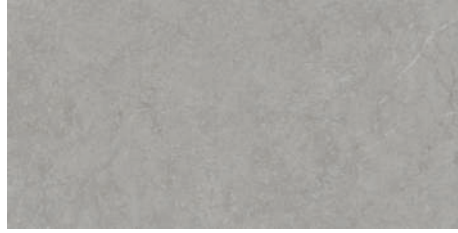
iNVENT

iNNOVATE

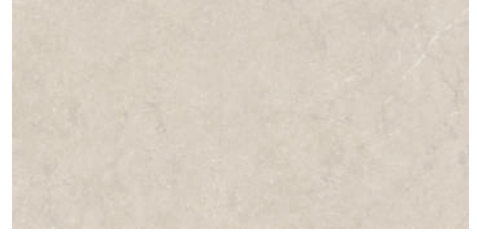
iNSPIRE



Lima Bianco



Lima Grey



Lima Crema



Lima Brown



Pearl White

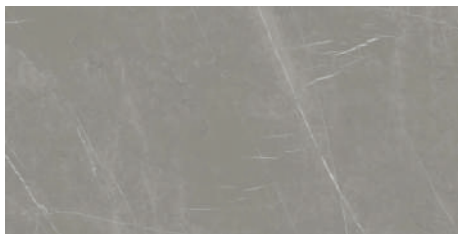




Vitara Bianco & Ash



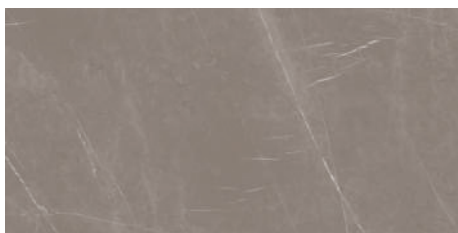
Vitara Bianco



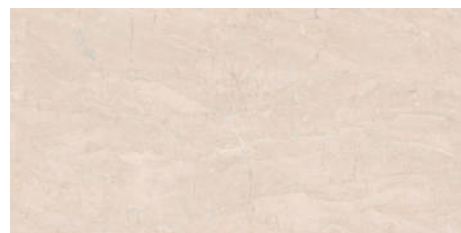
Vitara Ash



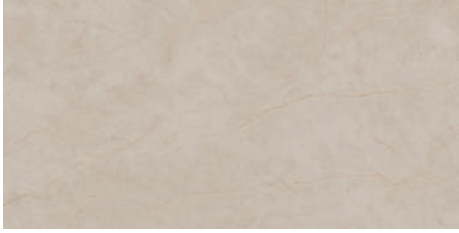
Vitara Beige



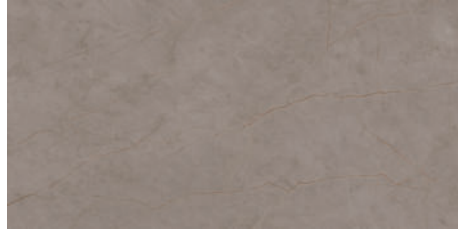
Vitara Brown



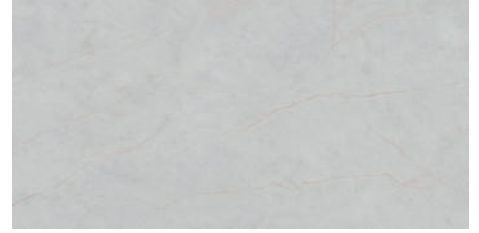
Delucia Crema



Aldus Beige



Aldus Brown



Aldus Bianco



Aldus Grey



Bruma Statuario



Lasa Statuario

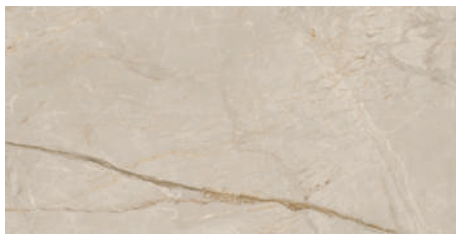




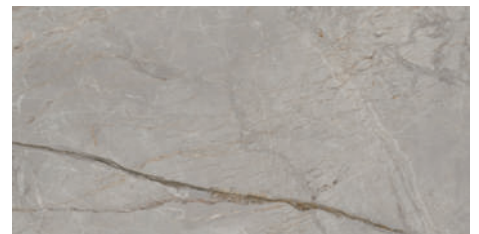
Agony Beige



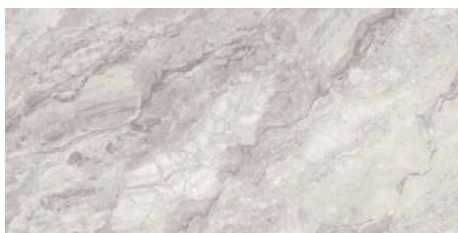
Agony Beige



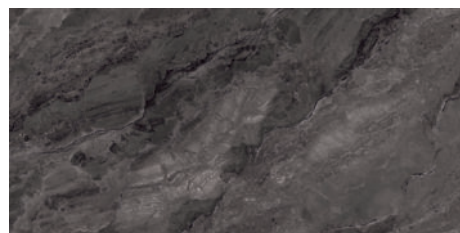
Fonsino Beige



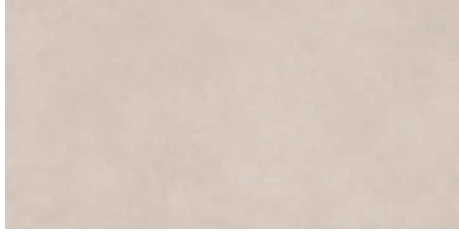
Fonsino Grey



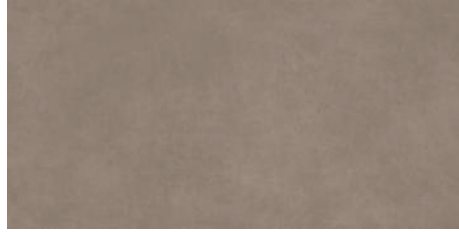
Cambia Grey



Cambia Moca



Valmonte Beige



Valmonte Brown



Valmonte Beige Morocco



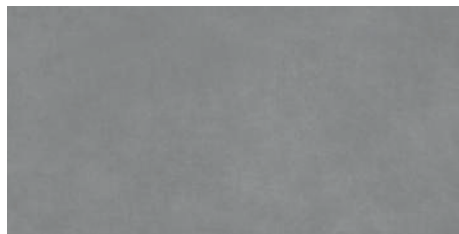
Valmonte Beige Bar Deco



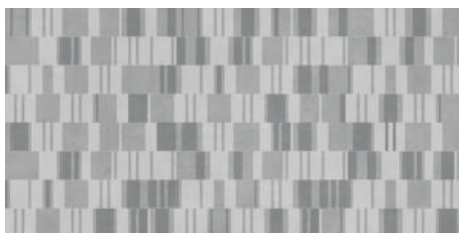
Valmonte Beige
Valmonte Brown
Valmonte Beige Bar Deco
Valmonte Beige Morocco



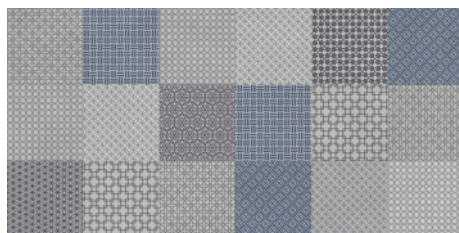
Valmonte Grey



Valmonte Smoke



Valmonte Grey Bar Deco

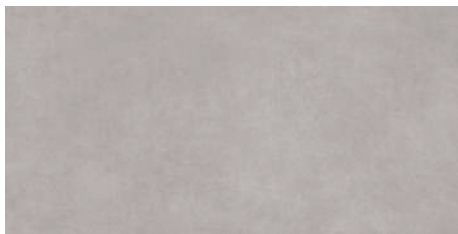


Valmonte Grey Checker

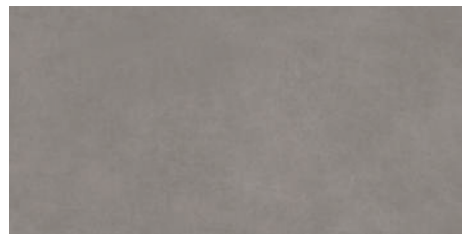




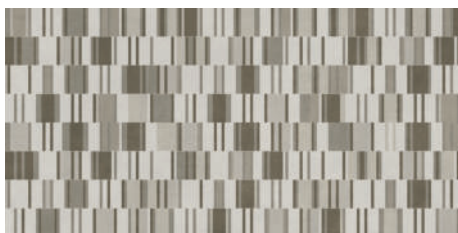
Valmonte Dim & Valmonte Mocha Venice



Valmonte Dim



Valmonte Mocha



Valmonte Dim Bar Deco



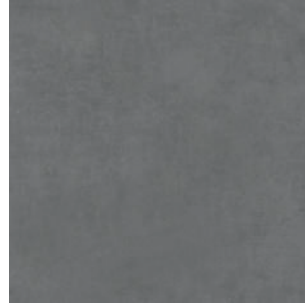
Valmonte Mocha Venice



Valmonte Dim



Valmonte Gris



Valmonte Steel




Valmonte Mocha



Valmonte Dim Dazzle 



Valmonte Gris Dazzle 



Valmonte Steel Dazzle 



Valmonte Mocha Dazzle 



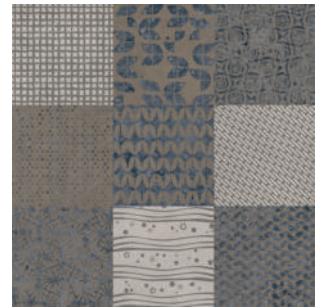
Valmonte Hexa Deco 



Valmonte Hexa Deco 



Valmonte Steel Deco 



Valmonte Mocha Deco 





Valmonte Dim & Hexa Deco



Valmonte Smoke



Valmonte Smoke Dazzle 
 Dazzle

600x600mm Dazzle



Waves Bianco



Waves Gris



Waves Green



Waves Blue



Evo Bianco



Flexo Brown & Pista

600x600mm Matt



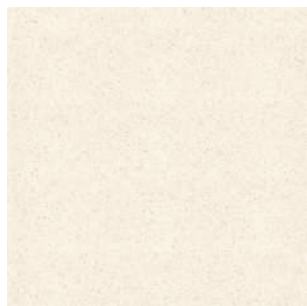
Flexo White



Flexo Brown



Flexo Pista



Sandy White

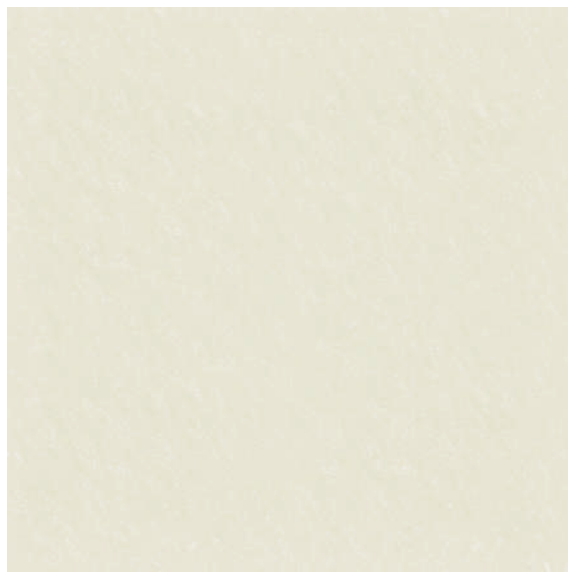


Sandy Black



Matrix White

Polished



Matrix Crema

Polished

600x600mm Polished

QUTONE
INNOVATIONS & MORE...




Matrix White

FASTRACK
COLLECTION

Standards according to ISO 13006 / EN 14411 / IS 15622-2017 (Group B1a): Dry - Pressed Ceramic Tiles (Glazed Vitrified Tiles)

CHARACTERISTIC	TEST METHOD	REQUIREMENTS	QUTONE STANDARD
DIMENSIONS & SURFACE QUALITY			
Deviation in Length & Width	ISO-10545-02	± 0.10%	Within Criteria
Deviation in Thickness	ISO-10545-02	± 5.00%	Within Criteria
Straightness of Sides	ISO-10545-02	± 0.10%	Within Criteria
Rectangularity	ISO-10545-02	± 0.10%	Within Criteria
Surface Flatness	ISO-10545-02	± 0.50%	Within Criteria
Surface Quality	ISO-10545-02	Min. 95% of the Tiles shall be free from visible defects that would impair the appearance of a major area of the Tiles	Within Criteria
PHYSICAL PROPERTIES			
Water Absorbption	ISO 10545-03	Average 0.08%, Individual 0.10% Max.	Within Criteria
Modulus of Rapture	ISO 10545-04	R ≥ 15 N/mm ²	Compliant
Breaking Strength	ISO 10545-04	Min. 1300 N	Compliant
Moisture Expansion	IS 13630-03	0.02 Max.	Compliant
Moh's Hardness	EN 101	Min. 5	Compliant
Surface Abration Resistance	IS 10545-07	Class II Min.	Compliant
Linear Thermal Expansion	IS 10545-08	Max. 6.0 x 10 ⁻⁶	Compliant
Thermal Shock Resistance	ISO 10545-09	Min. 10 Cycles	Compliant
Crazing Resistance	ISO 10545-11	4 Cycles at 7.5 Bar Min.	Compliant
Impact Resistance	ISO 10545-05	0.55 Min.	Compliant
Frost Resistance	ISO 10545-12	Required	Compliant
Resistance to Deep Abration (Unglazed Tiles)	ISO 10545-6	175 Max.	Compliant
Bulk Density	IS 15622-2	2.20 g/cc	Compliant
CHEMICAL PROPERTIES			
Resistance to High & Low Concentrations of Acids & Alkalis	ISO 10545-13	As per Mfg.	No visible effect
Resistance to household chemicals & swimming pool Salts	ISO 10545-13	Min. GB	Compliant
Stain Resistance	ISO 10545-14	Min. Class 3	Compliant

	Dimension	Pcs.	Sq. Mtr.	Sq. Ft.
	600x1200mm	3	2.16	23.25
	600x600mm	4	1.44	15.50

Disclaimer: Product images shown in this Catalogue are for Design Representation. All efforts are made to show accurate colour of the product but actual product colour may differ from the printed image due to printing limitations. It is advised to see the product samples for actual colour reference. Shade variation is inherent characteristic of ceramic products. Hence different sizes and batches of same design may have variation in Colours. Please follow the Tile Laying instructions printed on the box before installing the Tiles. Company may change the designs, colours, randomness or book-match without prior intimation. Due to continuous technology upgrade technical specification of the products may change without prior intimation.

Excellence

is the unlimited ability to improve

Quality

of what you have to offer

- Rick Pitino

2008

- ▲ Inception of Qutone Ceramic by bright young minds with a vision to provide World Class Ceramic Products to Indian Consumers.

2009

- ▲ Wall Tile Production started in First Unit with 4000 M²/Day capacity.

2010

- ▲ Adopted modern technology; commencement of High-Tech HD Digital Printing - One of the 1st Tile Company in India.

2014

- ▲ Wall Tile Unit Expansion-Capacity increased to 8000 M²/Day.
- ▲ Acquire Belleza's GVT Plant with 8000 M²/Day Production Capacity.
- ▲ Introduced India's First Thin GVT Tiles & Sugar Finish Surface iQ-Smart

2016

- ▲ Installed State-of-The-Art iMarble Slab Unit with 8000 M²/Day Capacity.
- ▲ Launched Asia's First & Largest Slab 1200x2400mm.
- ▲ Established new GVT plant with Production Capacity of 12000 M²/Day

2017

- ▲ Expansion & Modernization of GVT Plant.
- ▲ Total Production Capacity increased to 40,000 M²/Day.

2018

- ▲ Installed New iMarble Slab Unit with 14,000 M²/Day Capacity.
- ▲ New set-up equipped to produce World's Largest Slab up to 3600mm.
- ▲ Introduced Dry Facade Technology-iCLAD.
- ▲ Total Production Capacity increased to 54,000 M²/Day.

2019

- ▲ Launched India's First Full Body Stoneware Slab 1000x3000~15mm
- ▲ Launched 600x1200~6mm Thin Slab-First Small Slab in India.

2020

- ▲ Launched Stoneware Slab 1200x1800~15mm, 800x2400~15mm
- ▲ Launched Seamless Collection 1200x1800mm, Rocker Matt

2021

- ▲ Launched different finishes in 600x1200 (Kontinua, Aroma, Kerinox, Dazzle, Rustico, Granulux, Marmorino)
- ▲ Launched Pastello-Dove finish, Aura Natural Body & Full body in 1200x1800

QUTONE CERAMIC PVT. LTD.

Corporate Office

11, Titanium, Corporate Road, Opp. Prahalad Nagar Garden,
Satellite, Ahmedabad - 380015, Gujarat, India.
info@qutoneceramic.com

QUTONE EXPERIENCE CENTERS

Ahmedabad

Sindhu Bhavan Road, Nr. Sindhu Bhavan, Bodakdev,
Ahmedabad - 380054. Gujarat. Cell: +9170690 01513

Mumbai

2nd Floor, Chedda Arcade, Khira Nagar, S V Road, Santacruz (West),
Mumbai- 400054. Maharashtra.
Cell: +919909042399

Delhi

Plot No. 117, Sector 44, Gurgaon - 122003, Haryana.
Tel.: +91124 4223770

Bengaluru

Casa Qutone, #41, St. John's Church Road, 1st Floor, Above GIRIS,
Shivajinagar, Opp. Coles Park, Bengaluru- 560051. Karnataka.
Cell: 080 40922655, +918884485022

Chennai

41/158, North Usman Road, T.Nagar, Chennai- 600017. Tamil Nadu.
Cell: +91 99090 42354

Hyderabad

Central Square, Ground Floor, 8-2-309/7/1, Road Number 14, GS
Nagar, Nandi Nagar, Banjara Hills, Hyderabad - 500034. Telengana.
Cell: +9176809 06394

Cochin

288 J, M. R. Arcade, Pathadipalam, Metro Pillar No. 333, South
Kalamaserry, Cochin- 682033. Kerala.
Cell: +9198460 96516

Jaipur

Plot No. 8, 2nd Floor, Rajeev Vihar, Opp. Metro Pillar No.30, Near
Manasarovar Metro Station, Jaipur- 302020. Rajasthan.
Cell: +91 99296 04641

Chandigarh

Plot No. 1619 (JLPL), Industrial Area, Sector 82, Airport Road, Mohali-
SAS Nagar, Mohali- 160055. Punjab.
Cell: +91 99150 40096

Pune

259, Shaniwar Peth, Vishnukrupa Hall Building,
Pune - 411030. Maharashtra. Cell: +91 75067 21335

Italy Sassuolo

Via Regina Pacis, No. 32, 1st Floor, Sassuolo (MO), 41049, Italy.
Phone: +39 05 36805993



qutoneceramic.com

Scan the QR code for our
wide range of products

